

# Quality Assurance of Dental Education in Post-COVID On-line Learning Environment: Cases in Korea

Jae-Sung Kwon

Department and Research Institute of  
Dental Biomaterials and Bioengineering,  
Yonsei University College of Dentistry



# Contents

- Quality assurance of dental education in Korea
- On-line Learning of dental education in Korea - A case in Yonsei University College of Dentistry
- Other activities related to dental education – Quality assurance of dental education using on-line platform



# Quality Assurance of Dental Education in Korea

# Dental Schools in Korea

## Eleven Dental Schools (750+ graduates, each year)

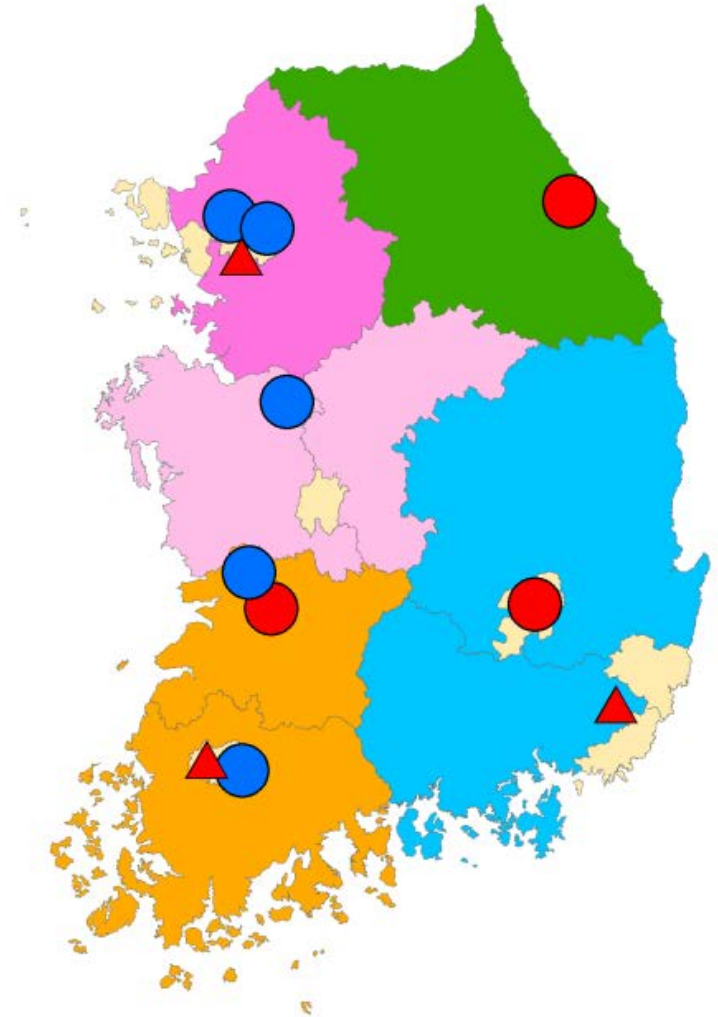
6 National (red), 5 Private (blue)

8 schools with 6-year undergraduate program (circle)

3 schools with 7 or 8-year graduate program (triangle)

## To become a dentist in Korea, one must

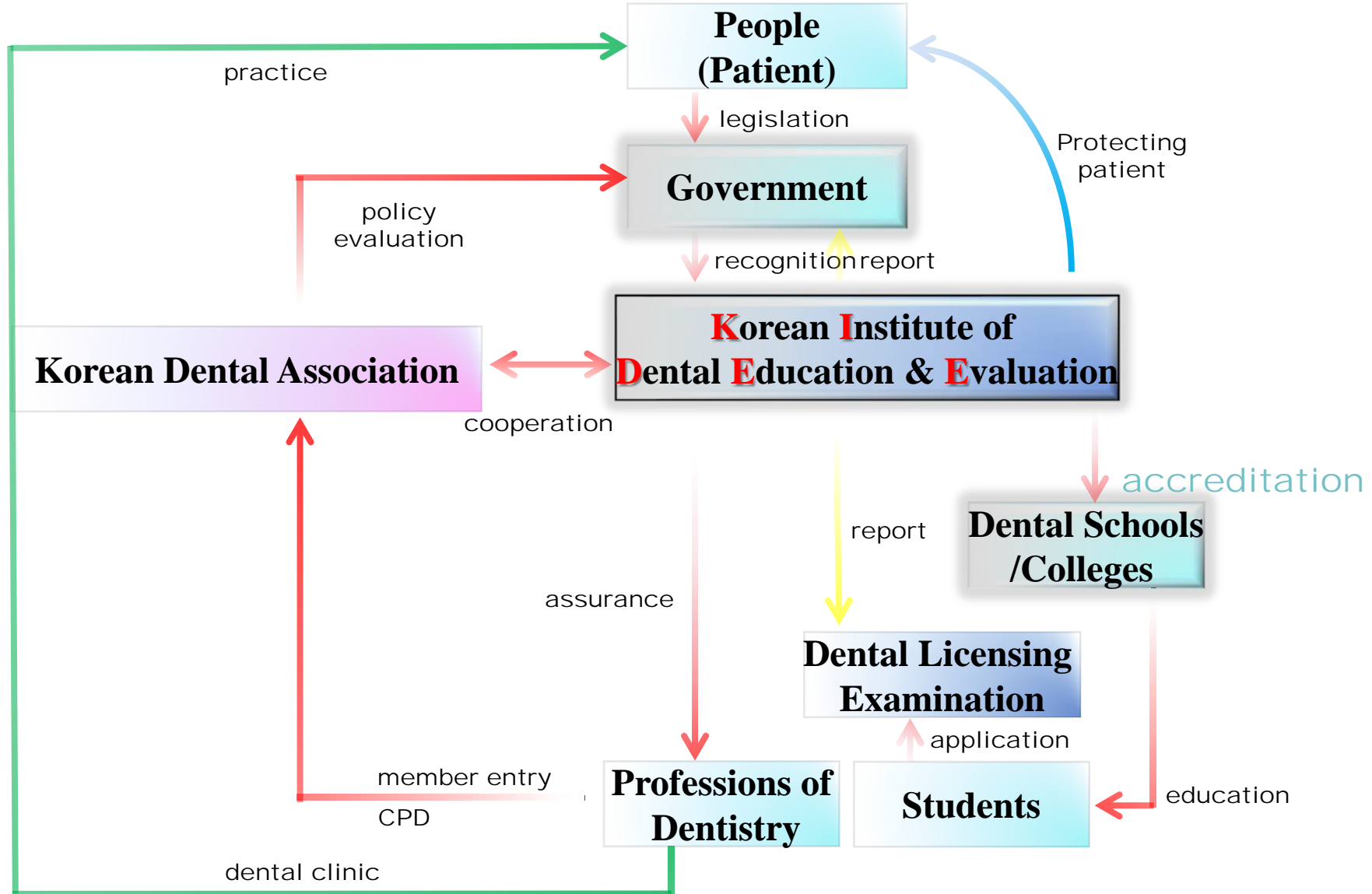
- Graduate from the dental school whose predoctoral program has been accredited by KIDEE.
- Pass the National Dental Licensing Exam.

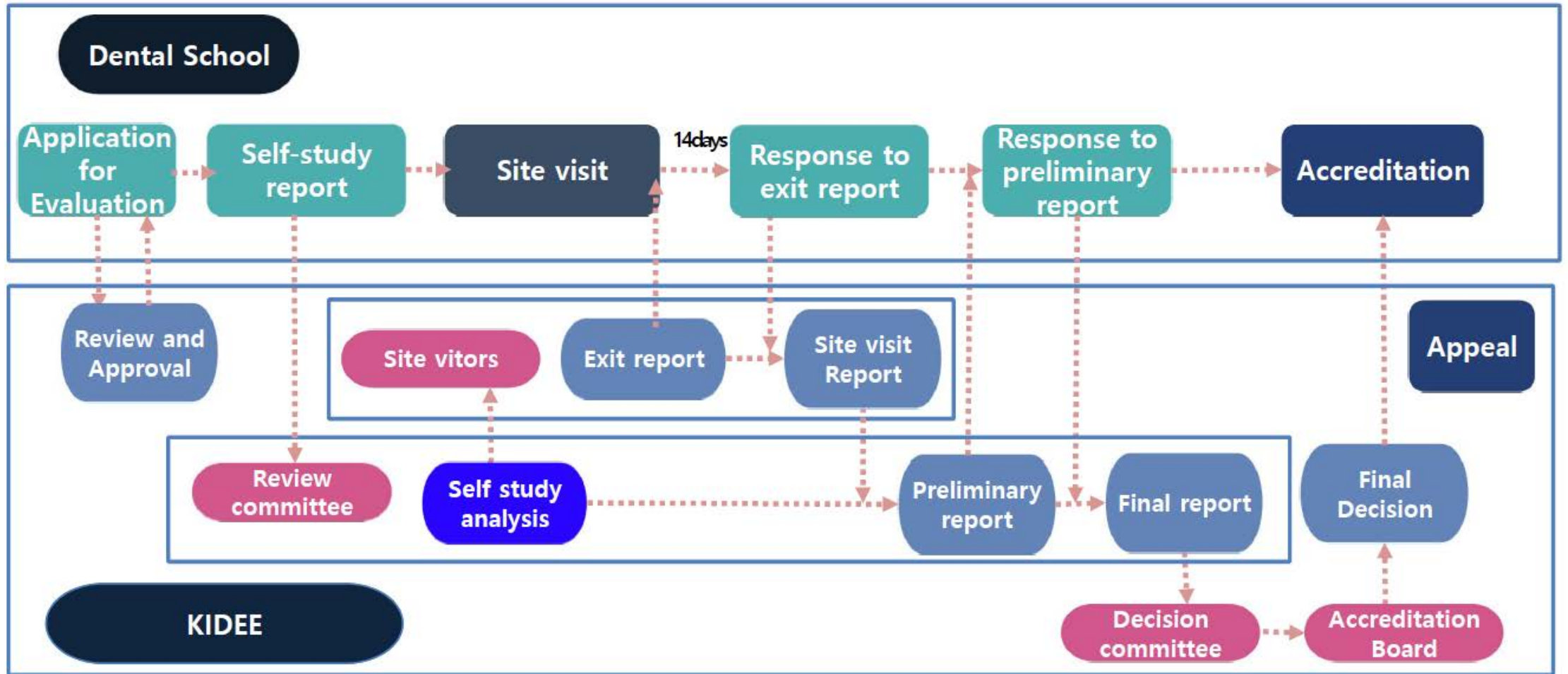




## **Korean Institute of Dental Education and Evaluation (KIDEE)**

- Founded in 2007 for the purpose of quality assurance in dental education
- Is an independent, non-profit organization approved by the Korean Ministry of Education.
- Accredits predoctoral dental education programs in Korea.
  - Developing accreditation standards, educating evaluators, designing accreditation process, and making accreditation decisions on dental education programs.





**Observation of the process is possible during site visit!**



## During COVID-19

- 4 different stages of 'social distance'.
  - Relatively low incidence especially with vaccinations (no total lock down)
  - But limited gathering in accordance to 'social distance' stages
  - Ministry of Health and Welfare provided the guidance on patient care.
- 
- **Changes in provision of dental education**
  - **Changes in managing quality assurance of dental education**





**On-line Learning of  
Dental Education in Korea  
- A case in  
Yonsei University College of Dentistry**



YONSEI UNIVERSITY  
COLLEGE OF DENTISTRY



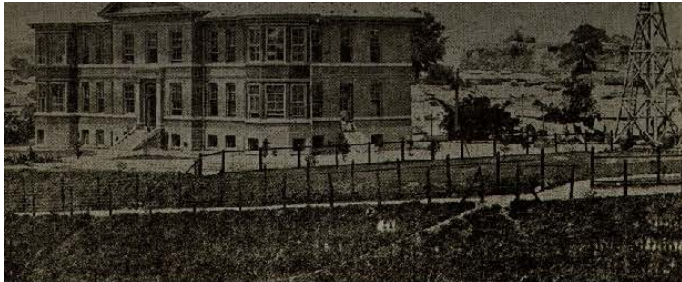


# 110 Years of Dentistry.

# Preparing for



Commission on Dental Accreditation



## 연세 치의학 100주년 (1915 ~ 2015)

1915년 일제 강점기의 암울한 시대에 우리 민족을 사랑하여 선교사인 Dr. William J. Scheffley가 잊혀진 땅, 조선에 서양 치의학의 가르치기 시작한 것이 한국 치의학의 효시가 됩니다.





## On-line learning due to COVID-19

- Most of school/colleges are conducted **hybrid-based teaching** – lectures by online and practical sessions by offline.
- No 'shut down' and most of dental education is provided as before (except applying online lecture system).
- ZOOM, WebEx, etc



## Example of on-line learning – Problem Based Learning

- Problem based learning by WebEx
  - WebEx room with 6~7 students, 1 tutor
  - Scenarios is posted on on-line learning site
  - A student share screen with MS Word or Mind-map program
  - Active discussion in WebEx (**active participation is part of grading**)
  - **Tasks are uploaded to LearnUS with discussion via reply/thread function, which are assessed.**
  - **Easier to monitor students and recording is possible**
  - **Silence is more frequent?**

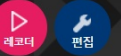


# On-line lecture/education platform



## 치의학의이해 (DEN1206.00-00)

차정열, 박진영, 박영범, 최성한, 박선형, 김성오, 표세욱, 송나영, 김준영, 김... | 팀티칭 | 조교



### 강의실 홈

#### 강의정보

- 강의계획서
- 참여자목록
- 전자출결

#### 성적/출석관리

- 학습이력현황
- 온라인출석부
- 성적부
- 평가비율관리

#### 수강생 알림

- 쪽지 보내기
- 이메일 보내기
- SMS 보내기

#### 기타 관리

학생화면으로 전환

### 학습활동

- 화상강의 추가
- 동영상 추가

### 과목공지

- [공지] 댓글 요청 & 사진 업로드 요청
- [공지] 게시판 자료 관련
- [공지] 치의학의 이해 리포트를 작성하면서 고려사항(중요)
- [공지] 근거중심 치의학 및 레포트 작성 예
- 치의학의 이해 오리엔테이션 자료

2021/09/03 10:27  
2021/09/03 10:26  
2021/09/03 10:24  
2021/09/03 10:23  
2021/09/03 10:22

### 강의 개요



과목공지



질문과 답변



자료실



모듈1 게시판



모듈2, 3 게시판



발표 게시판



과제 게시판



최종 발표 자료 게시판

### 이번주 강의

2주차 [9월06일 - 9월12일]



# On-line portfolio

- For clinical competencies recording and feedback
- Linked to patient information system in hospital (EMR)
- Other assessment and monitoring - Mentoring program and career development

연세대학교 치과대학  
2021년 테스트교수 89:55 연장하기

MY | 학생상담 | 예과 | 본과 | 임상실습 | 나의영상도 | 나의역량장고 | My Portfolio

학생 검색  
학생 선택 시 학생아이디로 이동

현재 지도 중인 학생 명단  
3학년 치의학 임상실습

학생 목록:

- 강선(2016192013) 본과 3학년
- 강승우(2017192011) 본과 3학년
- 고정민(2017192038) 본과 3학년
- 고병석(2017192022) 본과 3학년
- 고원재(2017192009) 본과 3학년
- 고원진(2017192049) 본과 3학년
- 곽병주(2017192046) 본과 3학년
- 김규석(2016192018) 본과 3학년
- 김명준(2017192020) 본과 3학년

피드백 현황

제출건수	195	피드백건수	127	대기건수	68	피드백률	65.13%
							TOTAL
							127/195건

공지사항

- 시스템 공지 [시스템 공지] 포털로오 서비스 이용 불가 2021-08-31 15:40
- 시스템 공지 [시스템 공지] 포털로오 서비스 이용 불가 2021-08-20 11:54
- 시스템 공지 [시스템 공지] 포털로오 서비스 이용 불가(2021-06-23) 2021-06-23 17:49

Feedback Talk

- 중재별 임상참여 확인하였습니다. 테스트교수 2021-09-03 11:21
- 중재별 임상참여 확인하였습니다. 테스트교수 2021-09-03 11:21
- 니찰별임상참여(Attending) 참여하였습니다. 테스트교수 2021-09-03 10:40
- 역량평가/환자진료자격시험 확인하였습니다.

TO DO LIST

활동	학년	학생이름	제출일
역량평가/환자진료자격시험	본과 4학년	테스트4학년 test4	2021-09-02 19:11
역량평가/환자진료자격시험	본과 4학년	테스트4학년 test4	2021-08-31 09:39
역량평가/환자진료자격시험	본과 4학년	테스트4학년 test4	2021-08-20 11:03
역량평가/환자진료자격시험	본과 4학년	테스트4학년 test4	2021-08-20 11:02
역량평가/환자진료자격시험	본과 4학년	테스트4학년 test4	2021-08-20 10:59
연구계획	본과 1학년	테스트4 test34	2021-08-06 13:25
중재별 임상참여	본과 3학년	테스트1 test31	2021-07-23 17:18
중재별 임상참여	본과 3학년	테스트1 test31	2021-07-13 16:06
중재별 임상참여	본과 3학년	테스트1 test31	2021-07-13 16:05

연세대학교 치과대학  
2021학년도 본과 3학년 테스트1(test31) 89:53 연장하기

MY | 예과 | 본과 | 임상실습 | 나의영상도 | 나의역량장고 | My Portfolio

현재실습과정 전체

치의학교육학교실  
연세대학교 치과대학  
2021-01-04 - 2021-12-31

임상활동

- 영상과 순환관찰(Rotation)
- 니찰별임상참여(Attending)
- 세미나
- 중재별 임상참여
- 중입승계
- 기공
- 역량평가/환자진료자격시험
- 환정 승인 대기목록
- Report
- 현황 및 평가

Home > 임상실습 > [선택된] 치의학 임상실습 > 중재별 임상참여 > 목록

중재별 임상참여  
Case Observation / Participation  
테스트1 학생의 총 등록 건수는 133건입니다.

+ 작성하기

검색조건 Search

NO	과	임상실습활동	실습항목	제출교수	실습일시	제출일시	버전	상태
1	영상차이과							
2	영상차이과							
3	교정과							
4	치주과							
5	치주과							
6	보철과							
7	치악학교육학							
8	치주과							



## Lesson learned from COVID-19

- Student satisfaction for PBL
  - Survey to students (10 Questions, score out of 5)
  - Average score for PBL
    - 2019 (off-line): 4.40
    - 2020 (on-line): 4.49
    - 2021 (on-line): 4.46
- Exam results
  - Lower marks than off-line lectures?





## Lesson learned from COVID-19

- **Use of online system is useful but limited!**
  - Students/professors are now more comfortable with online based lectures
  - **Some learnings must be carried out offline!**
  - Some of technologies (online learning site, online portfolio) are used post-pandemic.
- **Need of developing new or improved online education system!**



**Other Activities**  
**Related to Dental Education –**  
**Quality Assurance of Dental Education**  
**using On-line Platform**



- Students are more familiar with the use of computer-based platform and National Board License Exam carried out using computer-based system (CBT)

- New accreditation standards post COVID

- Extensive revision in 2022.
- The number of standards reduced from 71 to 45
- New divisions or standards, such as **continuous quality improvement, patient-centered clinical education and student health and safety** have been added or emphasized in the revised version.

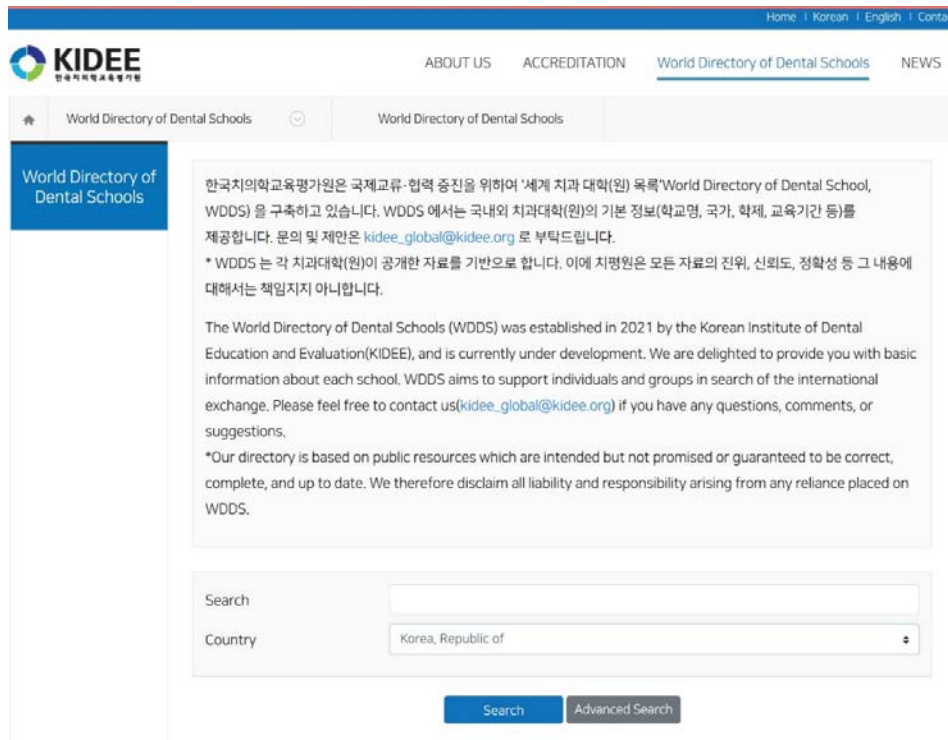
Area	division	Standards
1. Program Operation and Continuous Quality Improvement	1.1. Educational Program Operation System	2
	<b>1.2. Continuous Quality Improvement</b>	2
		4
	2.1. Competency	2
	2.2. Designing and Operating Curriculum	7
2. Education Program	2.3. Student Assessment	4
	<b>2.4. Patient-centered clinical education</b>	5
		18
	3.1. Admission	2
	3.2. Student education environment	2
3. Student	<b>3.3. Student Health and Safety</b>	2
	3.4. Supporting Student Welfare and Financial Management	2
	3.5. Supporting Student Activities	3
		10
4. Educational Environment—Faculty and Resources	4.1. Faculty	2
	4.2. Teaching and research activities	2
	4.3. Faculty Development and Support	2
	4.4. Managing and Operating Educational Resources	2
	4.5. Facilities and Resources	2
	4.6. Clinical Education Environment	3
		13
<b>Total</b>		<b>45</b>

## ● On-line based accreditation system

- For accreditation process using online system such as interviews for evaluation, self-evaluation report submission and assessment.
- Since 2022, all dental schools in Korea are required to submit their self-study reports online annually.
- Enables the KIDEE evaluation even in situations such as the COVID-19 pandemic.



- **Need of quality of assurance of dental graduates from abroad?**
  - World Directory of Dental Schools
  - [http://www.kidee.org/bbs/board.php?bo\\_table=directory](http://www.kidee.org/bbs/board.php?bo_table=directory)
  - **Need of system for International (or Asian) recognition system between each country's dental license (or education system)**



Home | Korean | English | Contact

KIDEE  
한국치대학교육평가원

ABOUT US ACCREDITATION World Directory of Dental Schools NEWS

World Directory of Dental Schools World Directory of Dental Schools

World Directory of Dental Schools

한국치의대학교육평가원은 국제교류·협력 증진을 위하여 '세계 치과 대학(원) 목록' World Directory of Dental School, WDDS) 을 구축하고 있습니다. WDDS 에서는 국내외 치과대학(원)의 기본 정보(학교명, 국가, 학제, 교육기간 등)를 제공합니다. 문의 및 제안은 [kidee\\_global@kidee.org](mailto:kidee_global@kidee.org) 로 부탁드립니다.

\* WDDS 는 각 치과대학(원)이 공개한 자료를 기반으로 합니다. 이에 치평원은 모든 자료의 진위, 신뢰도, 정확성 등 그 내용에 대해서는 책임지지 않습니다.

The World Directory of Dental Schools (WDDS) was established in 2021 by the Korean Institute of Dental Education and Evaluation(KIDEE), and is currently under development. We are delighted to provide you with basic information about each school. WDDS aims to support individuals and groups in search of the international exchange. Please feel free to contact us([kidee\\_global@kidee.org](mailto:kidee_global@kidee.org)) if you have any questions, comments, or suggestions.

\*Our directory is based on public resources which are intended but not promised or guaranteed to be correct, complete, and up to date. We therefore disclaim all liability and responsibility arising from any reliance placed on WDDS.

Search

Country

Search Advanced Search

Total 11/1

Country Name	City	School Name	Type	Year Started
Korea, Republic of	Gwangju	Chonnam National University, School Of Dentistry	National	1979
Korea, Republic of	Gwangju	Chosun University, School Of Dentistry	Private	1973
Korea, Republic of	Cheonan	Dankook University, College Of Dentistry	Private	1979
Korea, Republic of	Gangneung	Gangneung-Wonju National University, College Of Dentistry	Public	1994
Korea, Republic of	Jeonju	Jeonbuk National University, School Of Dentistry	Public	1979
Korea, Republic of	Seoul	Kyung Hee University, School Of Dentistry	Private	1967
Korea, Republic of	Daegu	Kyungpook National University, School Of Dentistry	Public	1974
Korea, Republic of	Yangsan	Pusan National University, School Of Dentistry	Public	1974
Korea, Republic of	Seoul	Seoul National University, School Of Dentistry	Public	1946
Korea, Republic of	Iksan	Wonkwang University, College Of Dentistry	Private	1978

1 2 »



thank you!

**jkwon@yuhs.ac**