

# **EN-GAWA ( 縁側) Service 2.0:**

A mechanism to connect all kinds of people to the local community

**Naohiko HAYATA, PhD**

 Hokkaido Information University

**2023 Global Health and Welfare Forum in Taiwan**

**Health for All: Strengthen Well-being through Collaboration and Empowerment for the Attainment of New Normal** Nov. 8th, Taipei, Taiwan

# What is the EN-GAWA services?

# EN-GAWA;

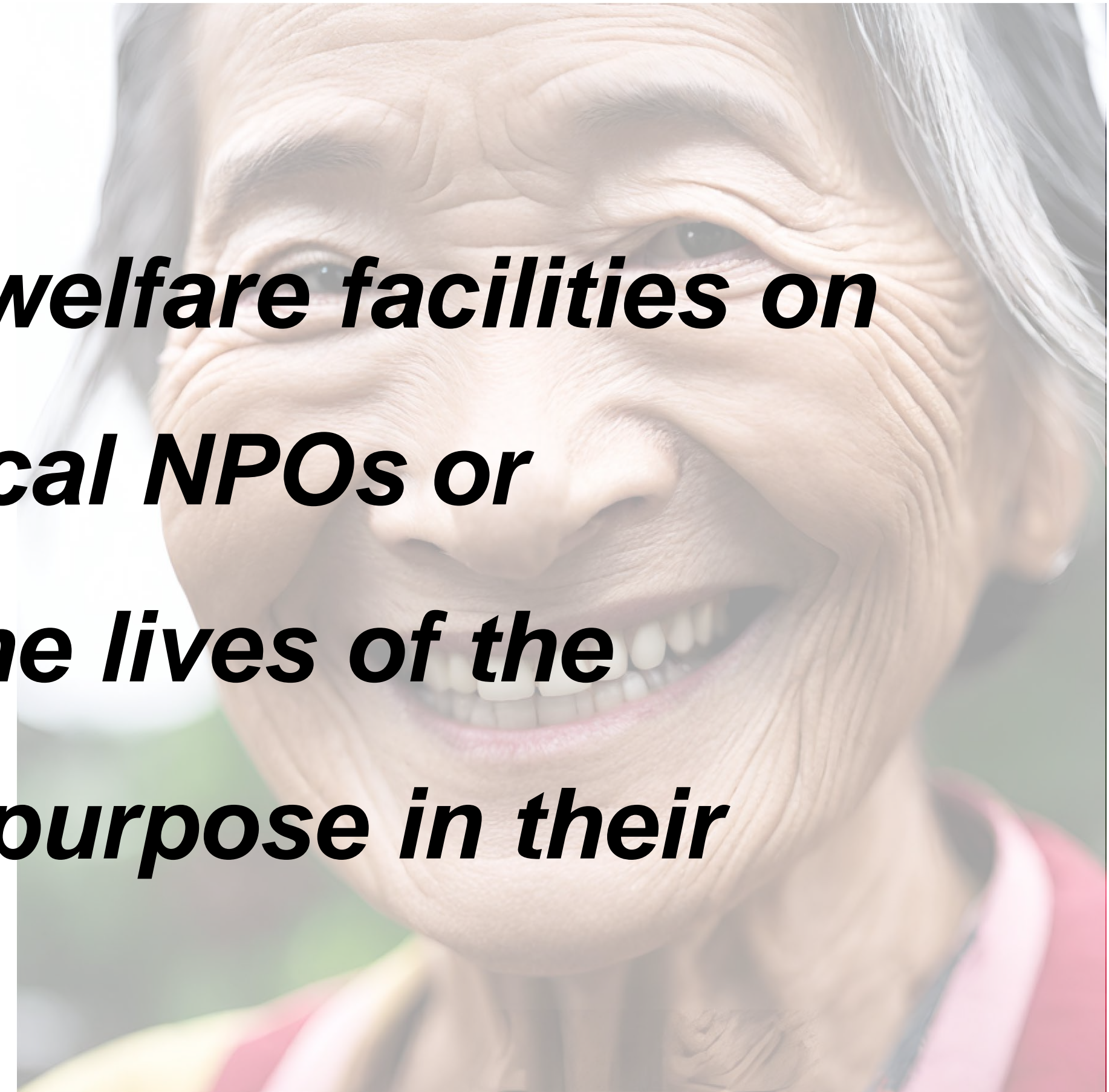
*The traditional porch or veranda-like space of a Japanese house, where people sit and talk over a cup of tea and other social activities.*



This image was generated by AI using Canva.

# EN-GAWA service;

***Community activities operated by welfare facilities on their own or in cooperation with local NPOs or volunteer organizations, support the lives of the older adults and create a sense of purpose in their lives..***



This image was generated by AI using Canva.

# EN-GAWA service;

*Activities that promote living and interacting with the community.*

*A place where people casually go to talk.*



This image was generated by AI using Canva.

# EN-GAWA service;

*Building Mutual Aid Relationships  
among the older adults or between the  
older adult and local resident.*

*Utilize the power of the healthy young-  
old.*



This image was generated by AI using Canva.



# **Coincidentally service started in 2000**

- **NPO “WATABOUSHI NO IE” (Kushiro, Japan)**
- **General welfare facility for the elderly  
”MOMOYAMA” (Kyoto, Japan)**
- **“Mather’s More Than a Cafe” (Chicago, USA)**



# Chang Rong Community (長榮社區)



- **Community Restaurant**
- **Health Check**

- **Community College and Drama Club**
- **Visiting**

# EN-GAWA service 2.0;

*Expanded to include children, their families,  
and people with disabilities . “diversity”*



Photos used with permission of Rise Ring Inc. <https://www.facebook.com/ds.yukinohana/photos>

# EN-GAWA service 2.0;

*Expanded to include children, their families,  
and people with disabilities. “diversity”*



Photos used with permission of Rise Ring Inc. <https://www.facebook.com/ds.yukinohana/photos>

***The concept of "EN-GAWA service" was born from a community-building perspective:***

- ***mutual assistance by local residents***
- ***the creation of a sense of purpose in life.***

***The concept of "Community Comprehensive Support Center " was born from the perspective of comprehensive community "care":***

- ***Resolve the fragmentation of medical and welfare services.***

# ***Community Comprehensive Support Center (After 2016) required;***

- ***to coordinate health and welfare with different fields ( employment, agriculture, and education...).***
- ***Multi-generational exchange***
- ***Multifunctional welfare centers***
- ***Comprehensive support to the elderly, the disabled, and children***

# The Role of Community Comprehensive Support Center;

***Coordination***

# The Role of EN-GAWA service;

***Closer state of full integration***



# Two Perspectives;

Welfare Service Provider



Community Member

# Welfare facilities should have a community coordinator;

- ***NPO “WATABOUSHI NO IE” (Hokkaido, Japan)***
- ***General welfare facility for the elderly “MOMOYAMA” (Kyoto, Japan)***
- ***“Mather’s More Than a Cafe” (Chicago, USA)***
- ***Social welfare corporation “ASHIBETSU JIKEI-EN” (Hokkaido, Japan)***
- ***“Tainan YMCA” (Tainan, ROC)***

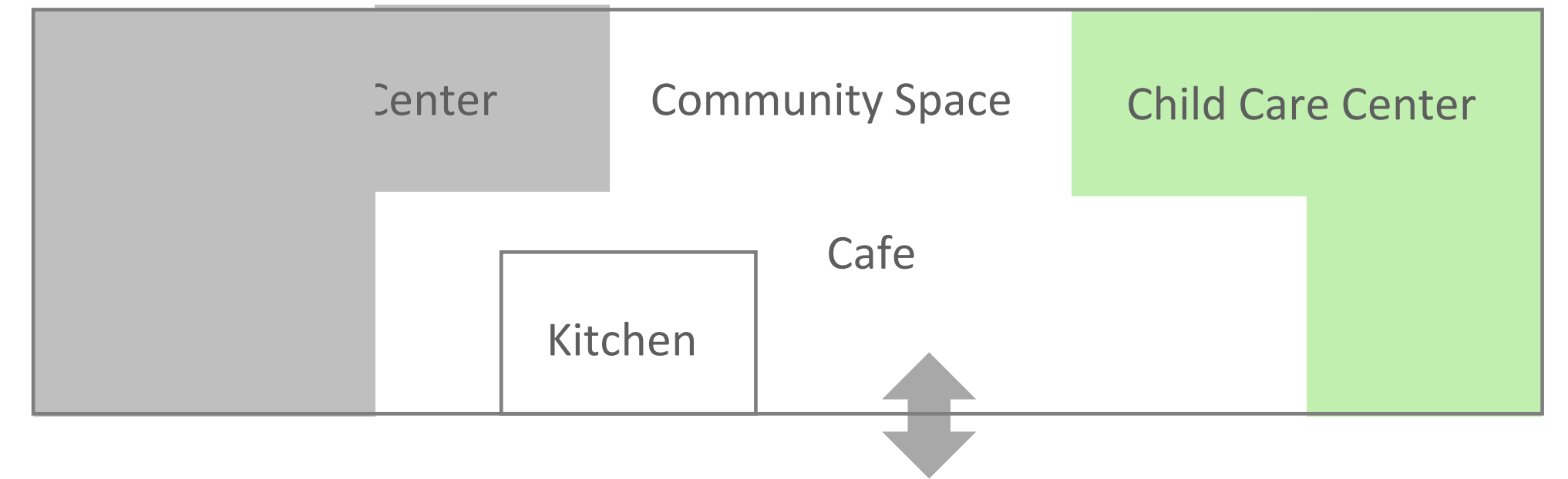
# NPO “WATABOUSHI NO IE” (Hokkaido, Japan)



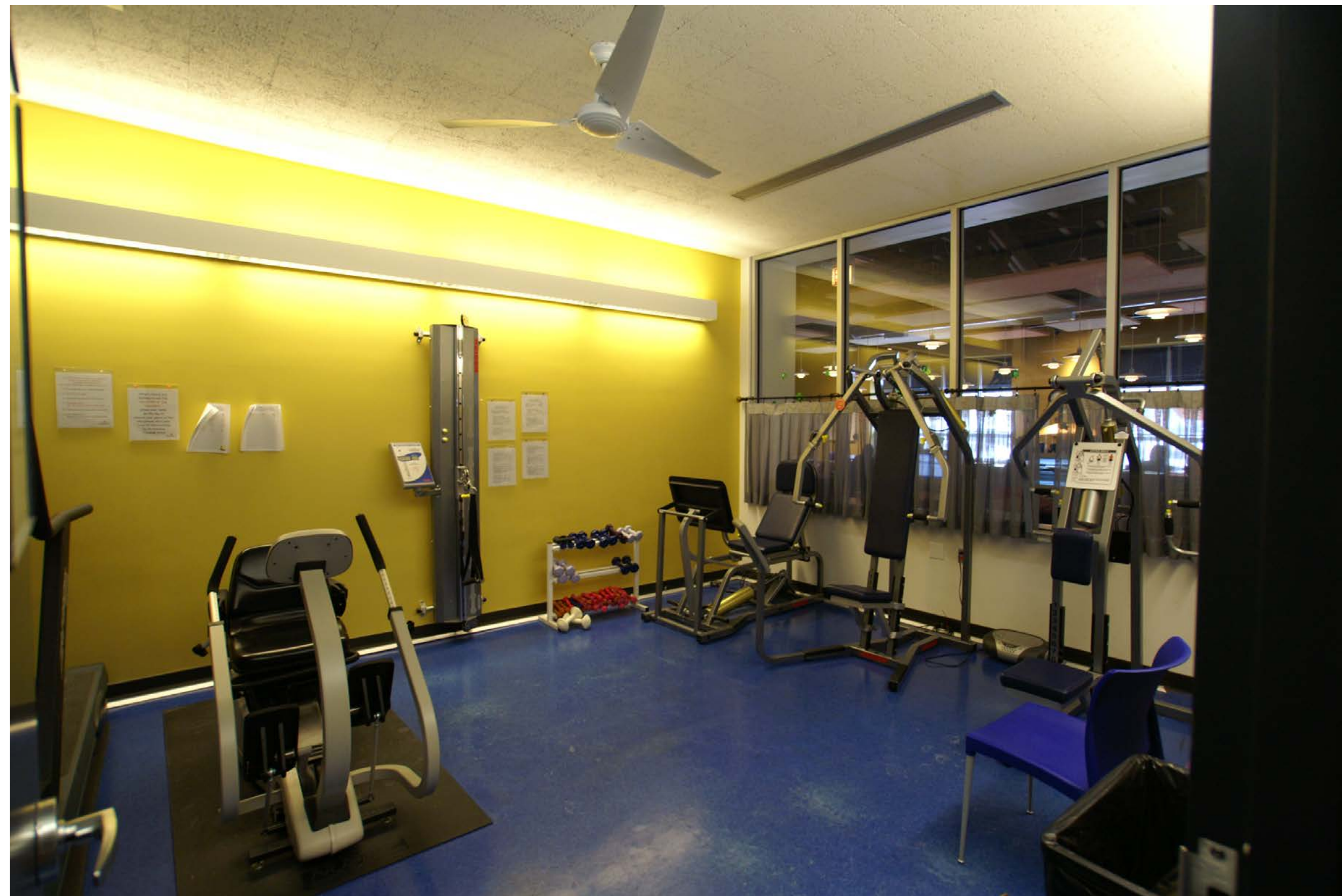
# KENKO-EN General welfare facility for the elderly "MOMOYAMA" (Kyoto, Japan)



<https://www.kenkouen.jp/shisetsu/momoyama/#momoyama01>



# “Mather’s More Than a Cafe” (Chicago, USA)

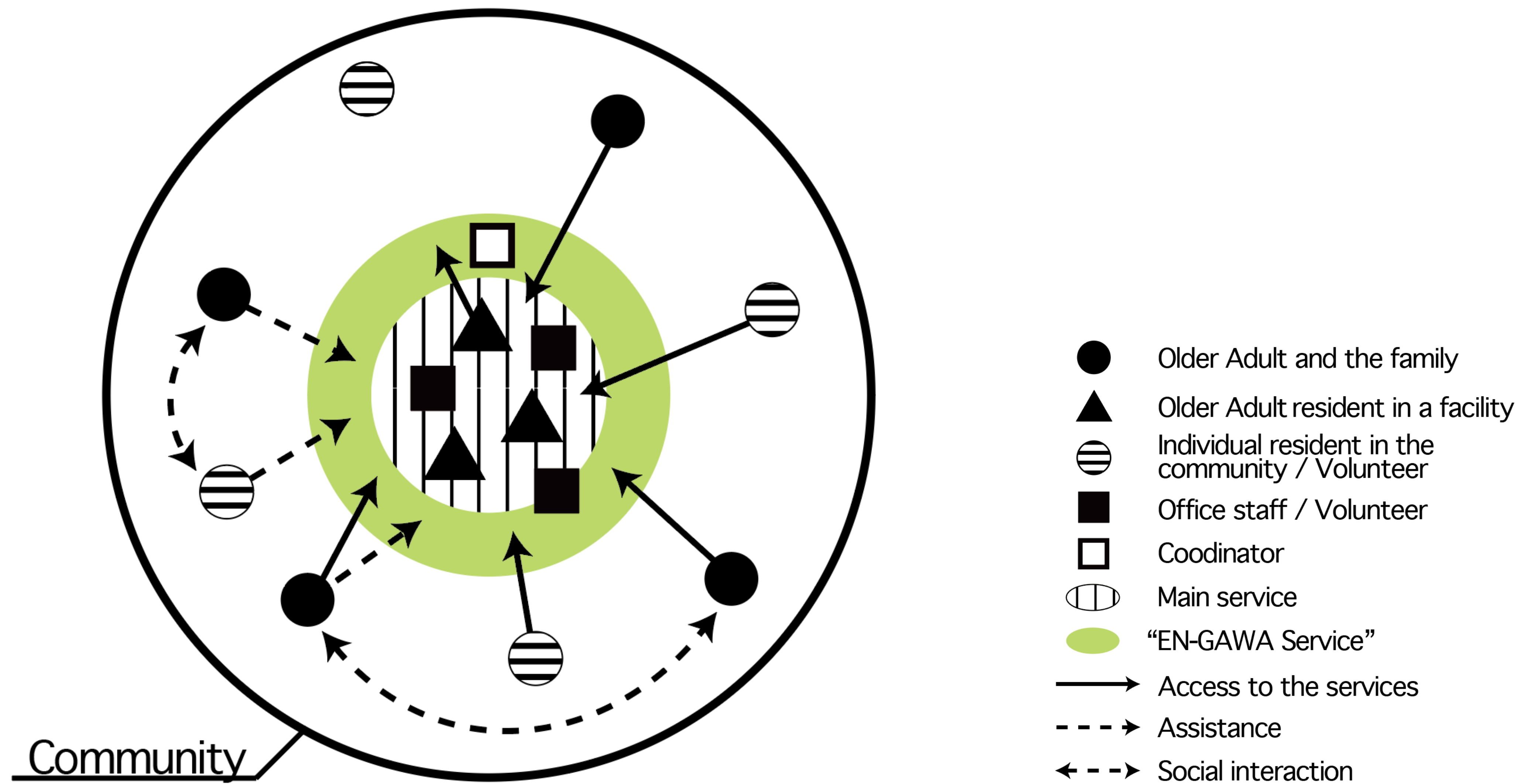


# Social welfare corporation “ASHIBETSU JIKEI-EN” (Hokkaido, Japan)



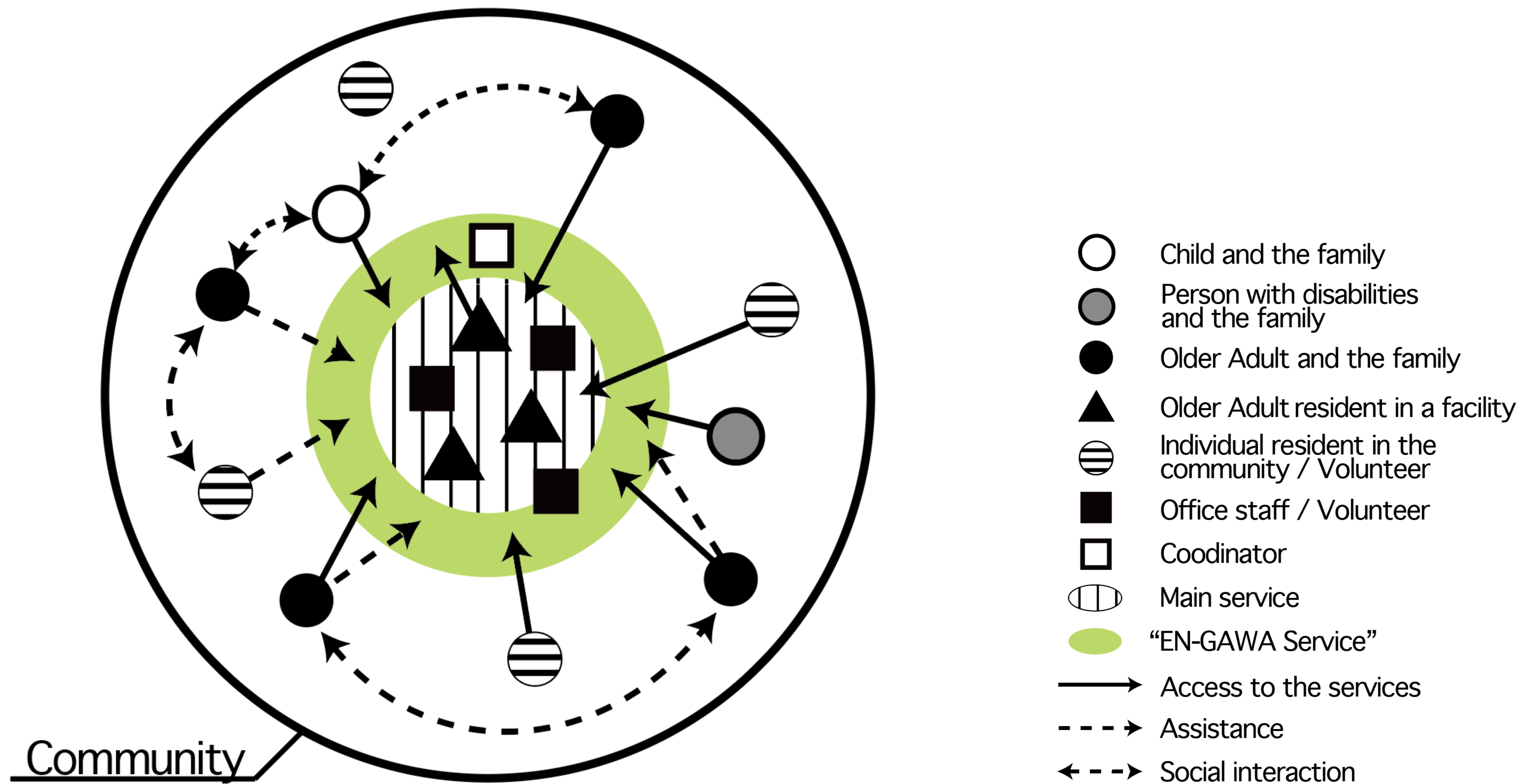
# Tainan YMCA





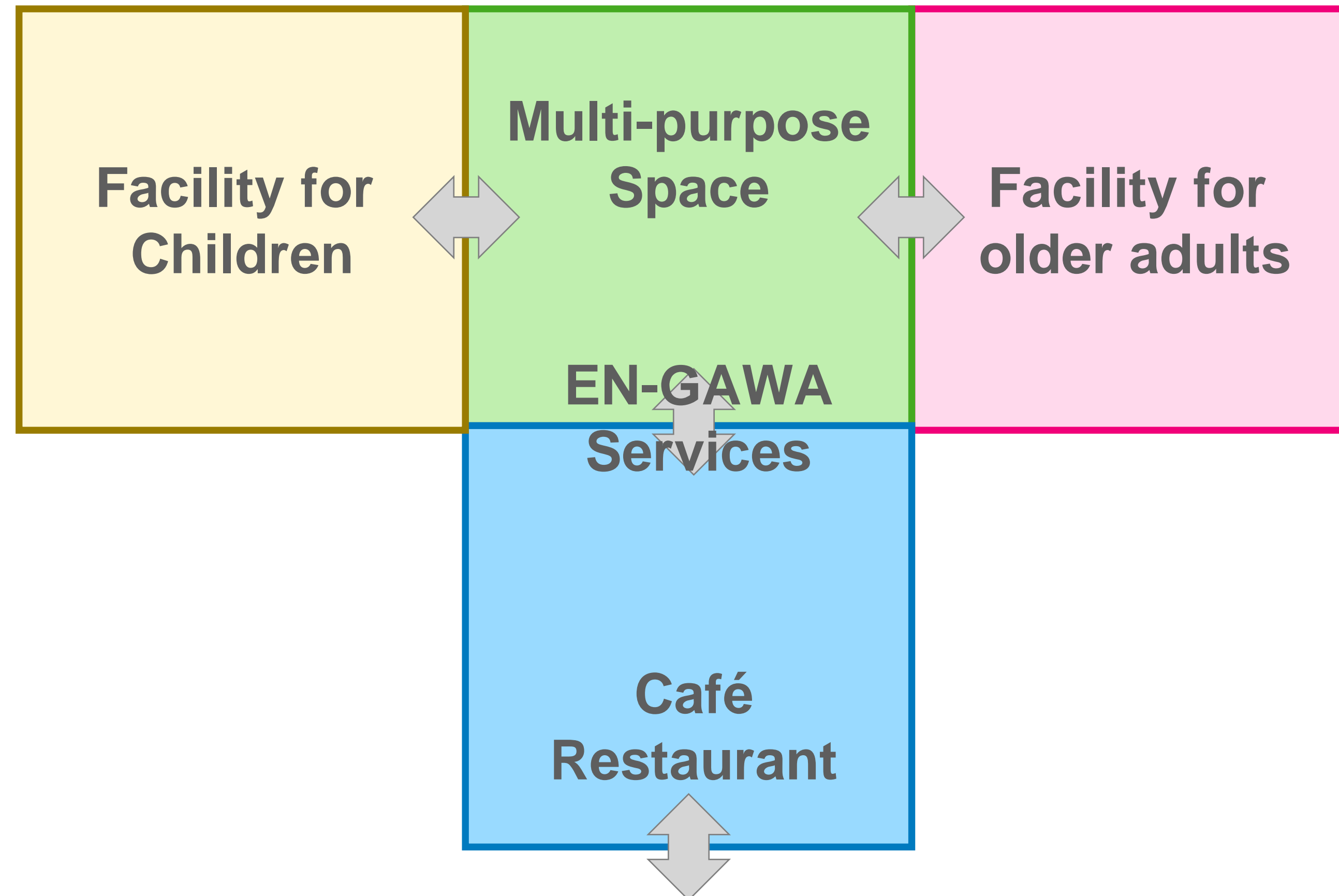
# The model of EN-GAWA service





# The model of EN-GAWA service 2.0

# Space arrangement for EN-GAWA service



# Space arrangement for EN-GAWA service



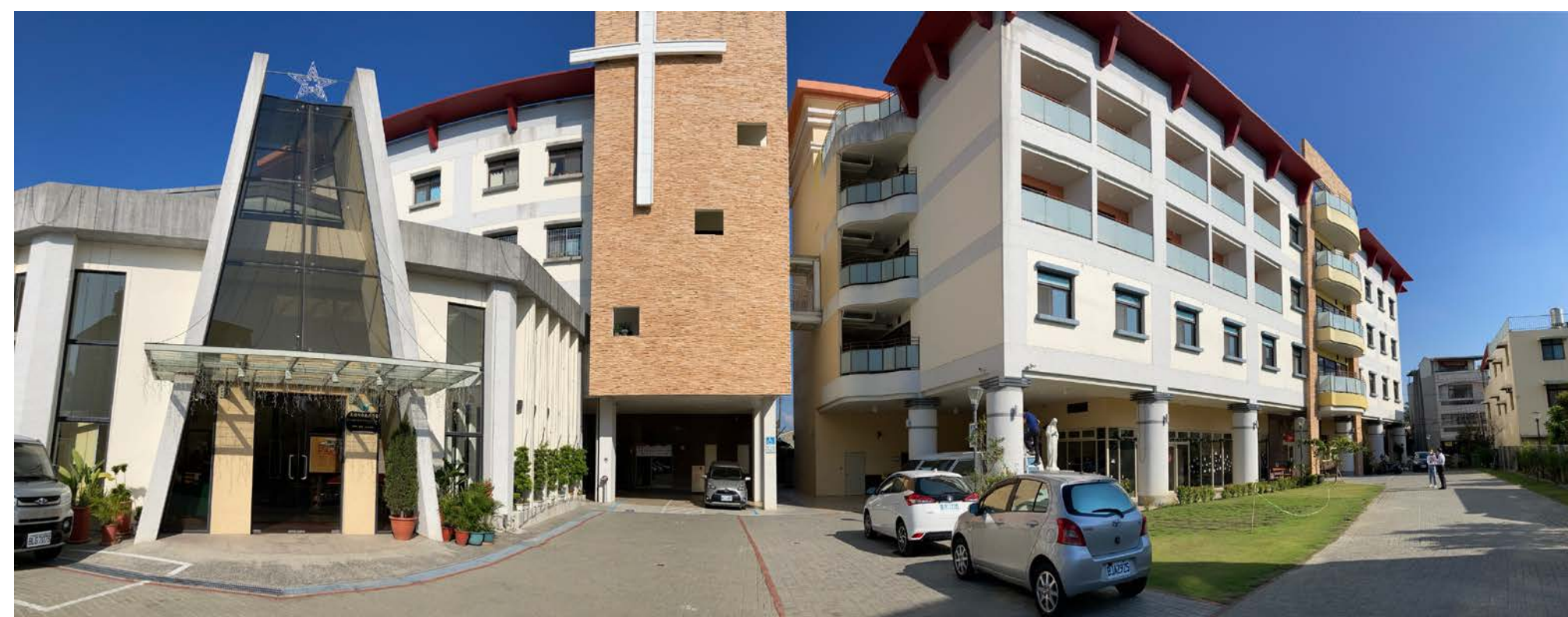
# Mixed Care Small-scale Multifunctional Nursing Home & Group Home “ANZU NO HANA”



# Other Facilities in Taiwan



# Other Facilities in Taiwan



# Thank you for your attention!

