

Partnership for Innovations to
Fight Infectious Diseases and
Leave No One Behind

Osamu Kunii, MD, MPH, PhD

CEO & Executive Director

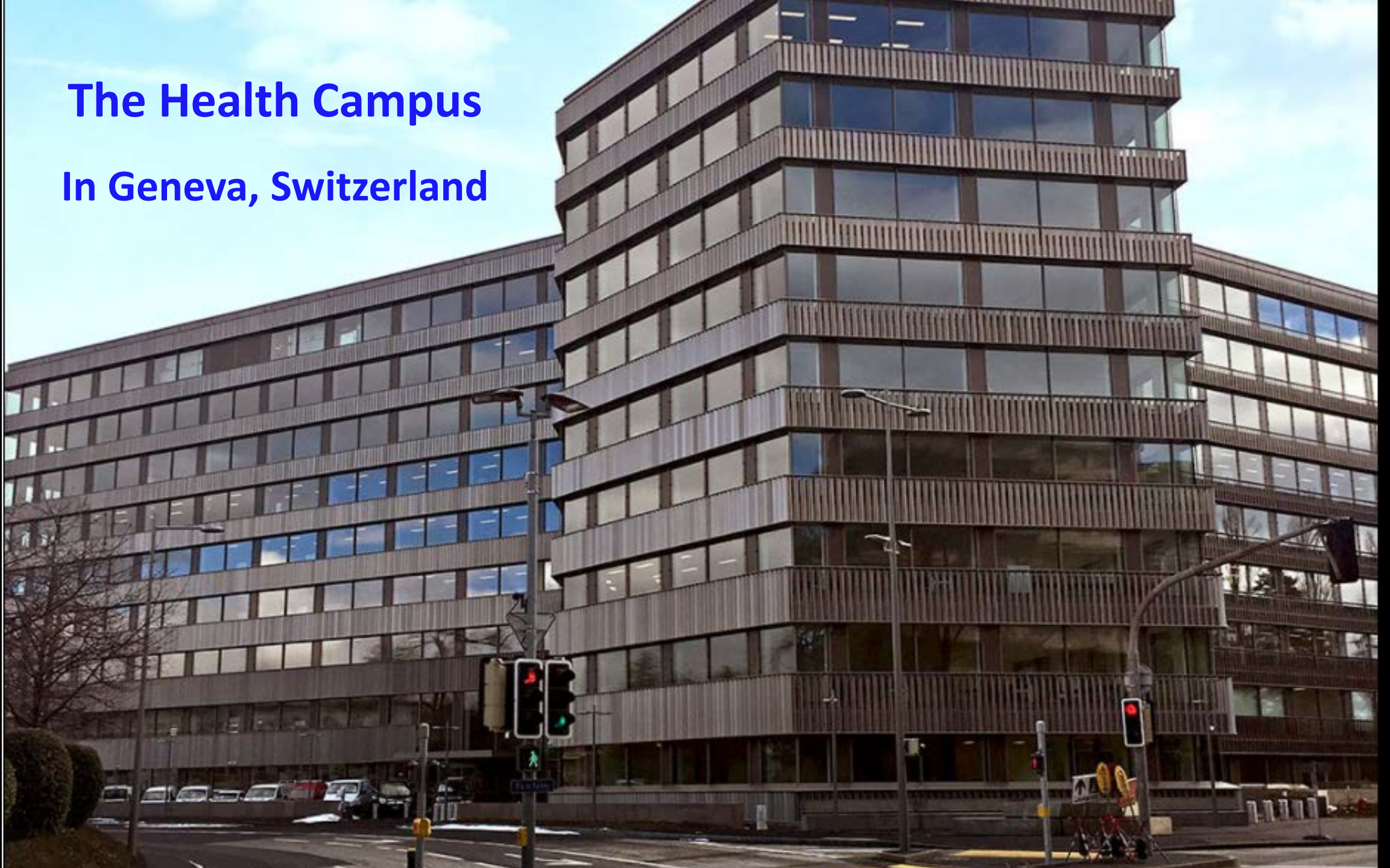
Global Health Innovative Technology

(GHIT) Fund

Innovation in 21st century partnership

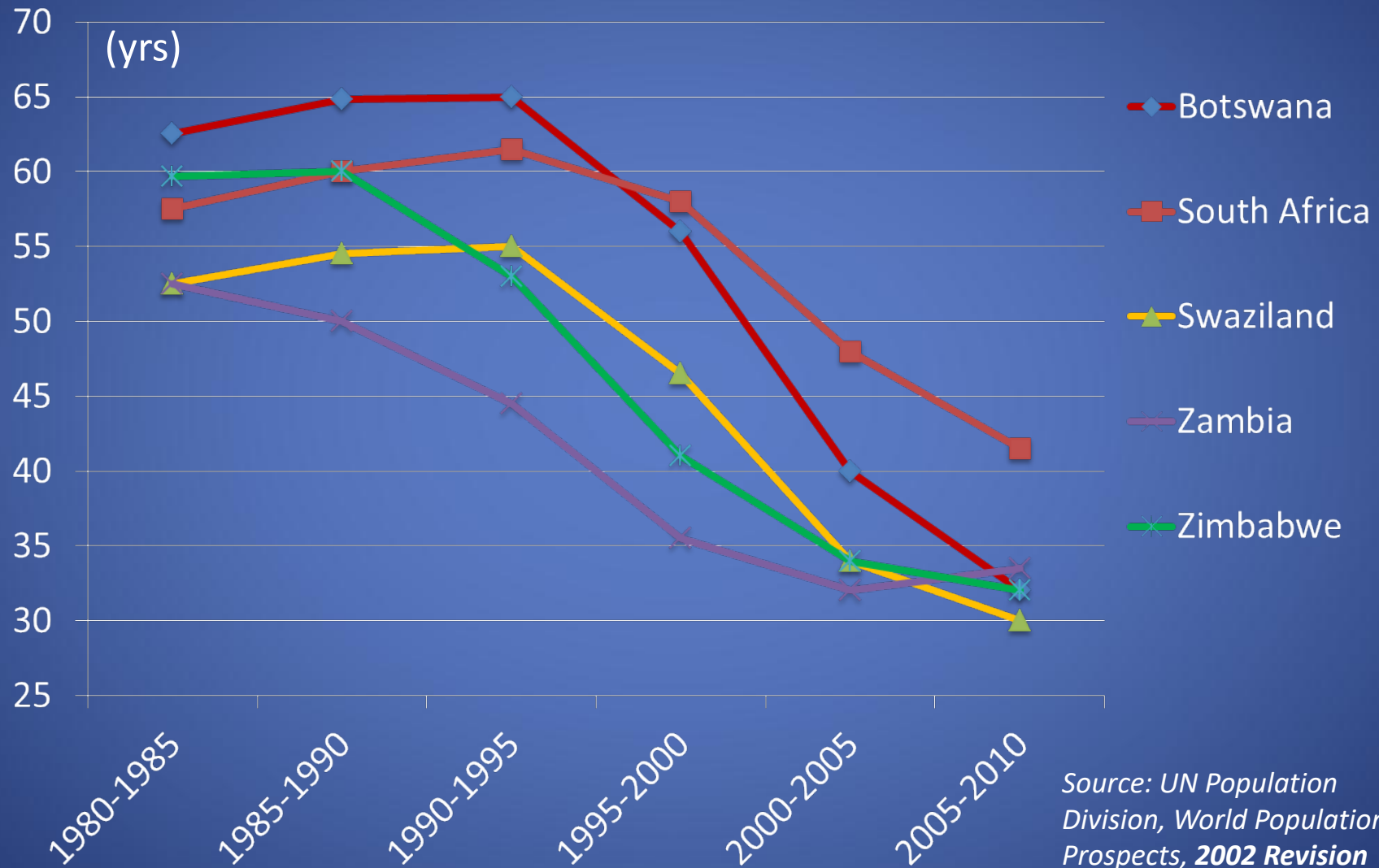
1. Gavi the Vaccine Alliance
2. The Global Fund to fight AIDS, Tuberculosis and Malaria

The Health Campus In Geneva, Switzerland





Rapid drop of life span in African countries





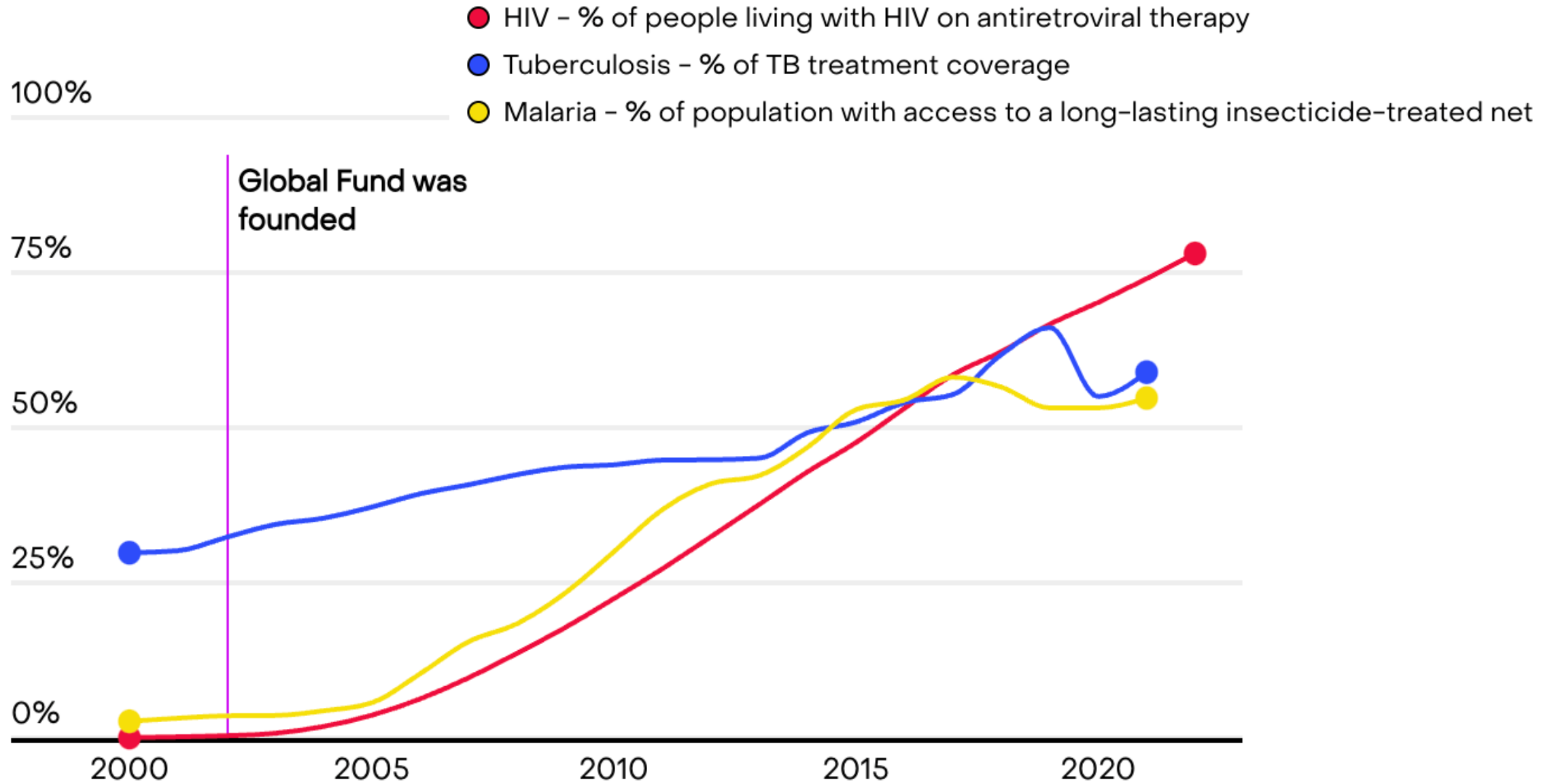
POWER OF PARTNERSHIP

- Not just information sharing
- Sharing responsibility for actions with common goal
- At all level : global, regional and country
- With all regions : Asia, Africa, Latin America, E. Europe
- With all sector : governments, UN/international organizations, academia, private foundations, industries, NGOs, civil society

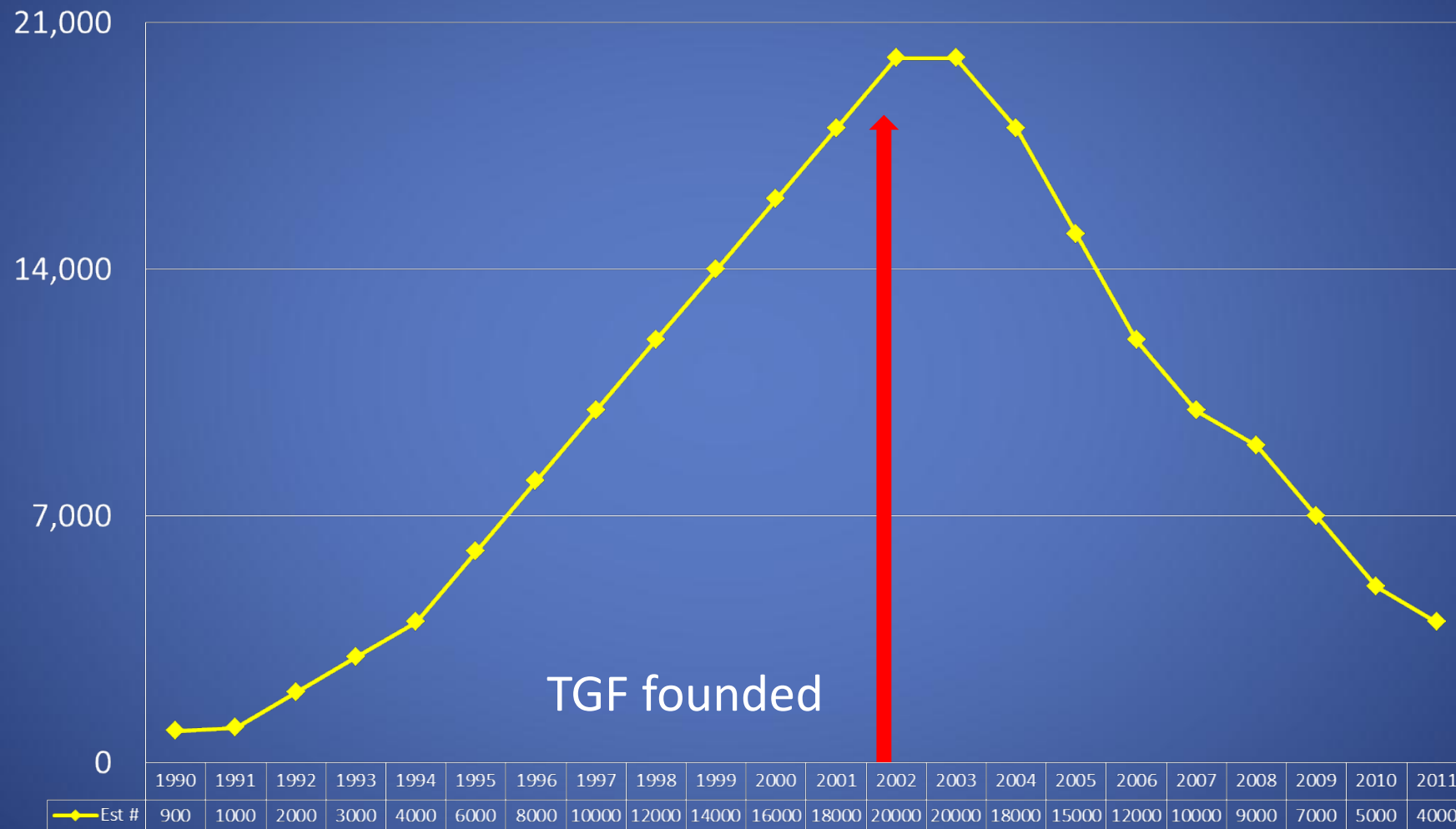
MECHANISMS FOR PARTNERSHIP

- Decision making : Board, Committees
- Fund raising
- Regional networking
- Country level:
 - - Ownership : support national plan and health system
 - - Country Coordination Mechanism (CCM)
 - - Strengthen civil society

Scaled up essential services

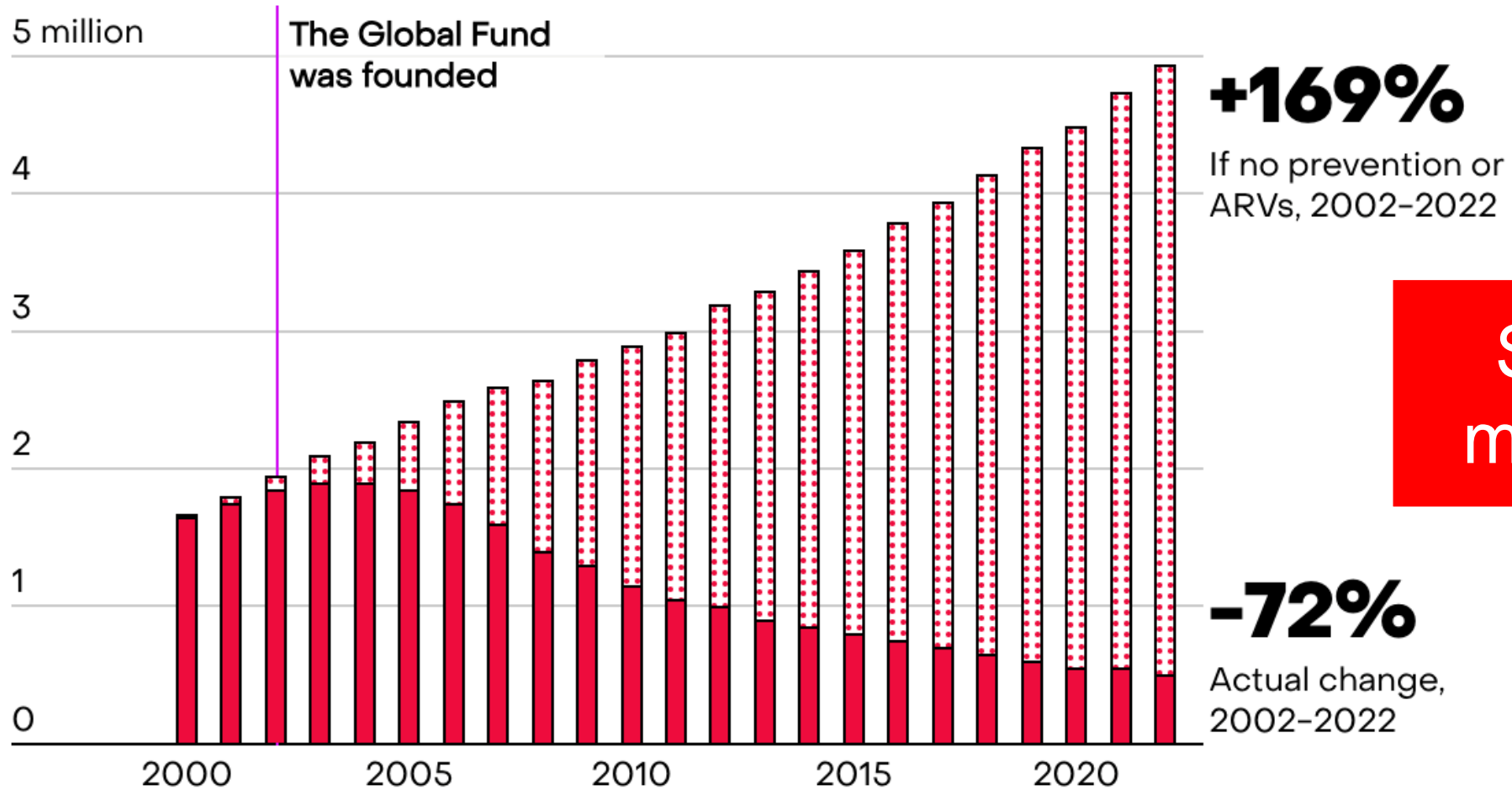


Rapid drop of deaths due to AIDS in Botswana



Source: UNAIDS Report on the Global AIDS Epidemic – 2012.

Impact (lives saved)



Saved 50 million lives

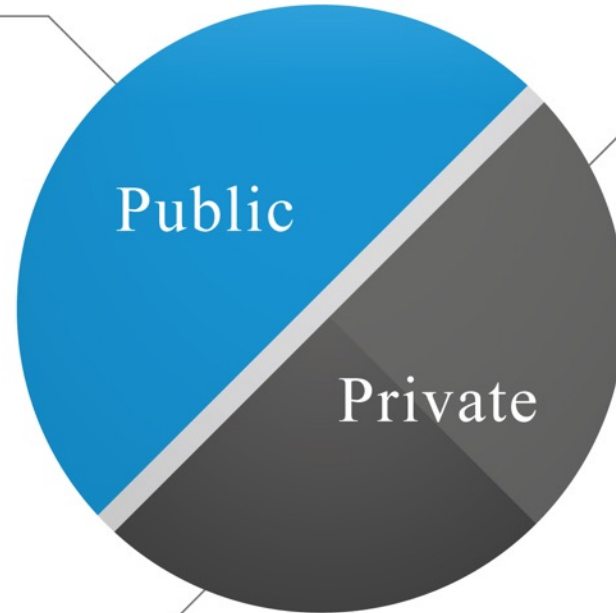


Joseph before and after initiation of treatment for HIV infection and tuberculosis.

Left: Photograph by David Walton. Copyright 2002 © Partners in Health. All rights reserved.
Right: Photograph by David Walton. Copyright 2003 © Partners in Health. All rights reserved.

Global Health Innovative Technology Fund (GHIT)

300 million USD (2013-2022)



Full Partners



Full Partners



Sponsors



Full Partners



Associate Partners



Affiliate Partners



As of March 2022

Poverty-related Diseases affect Neglected People

- Tuberculosis
- Malaria
- Neglected Tropical Diseases (NTDs)

Cases 2 billion

Deaths 2 million

Neglected Tropical Diseases (NTDs)



Buruli ulcer



Chagas disease
(American trypanosomiasis)



Dengue fever



Echinococcosis



Leishmaniasis



Lymphatic filariasis
(elephantiasis)



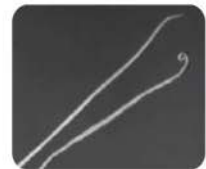
Mycetoma



Onchocerciasis
(river blindness)



Schistosomiasis
(bilharziasis)



Soil-transmitted
helminthiasis
(intestinal parasitic worms)



Dracunculiasis
(guinea-worm diseases)



Foodborne trematode
infections



Human African
trypanosomiasis
(sleeping sickness)



Leprosy



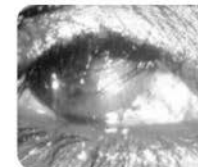
Rabies



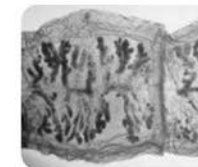
scabies



Snakebite envenoming



Trachoma

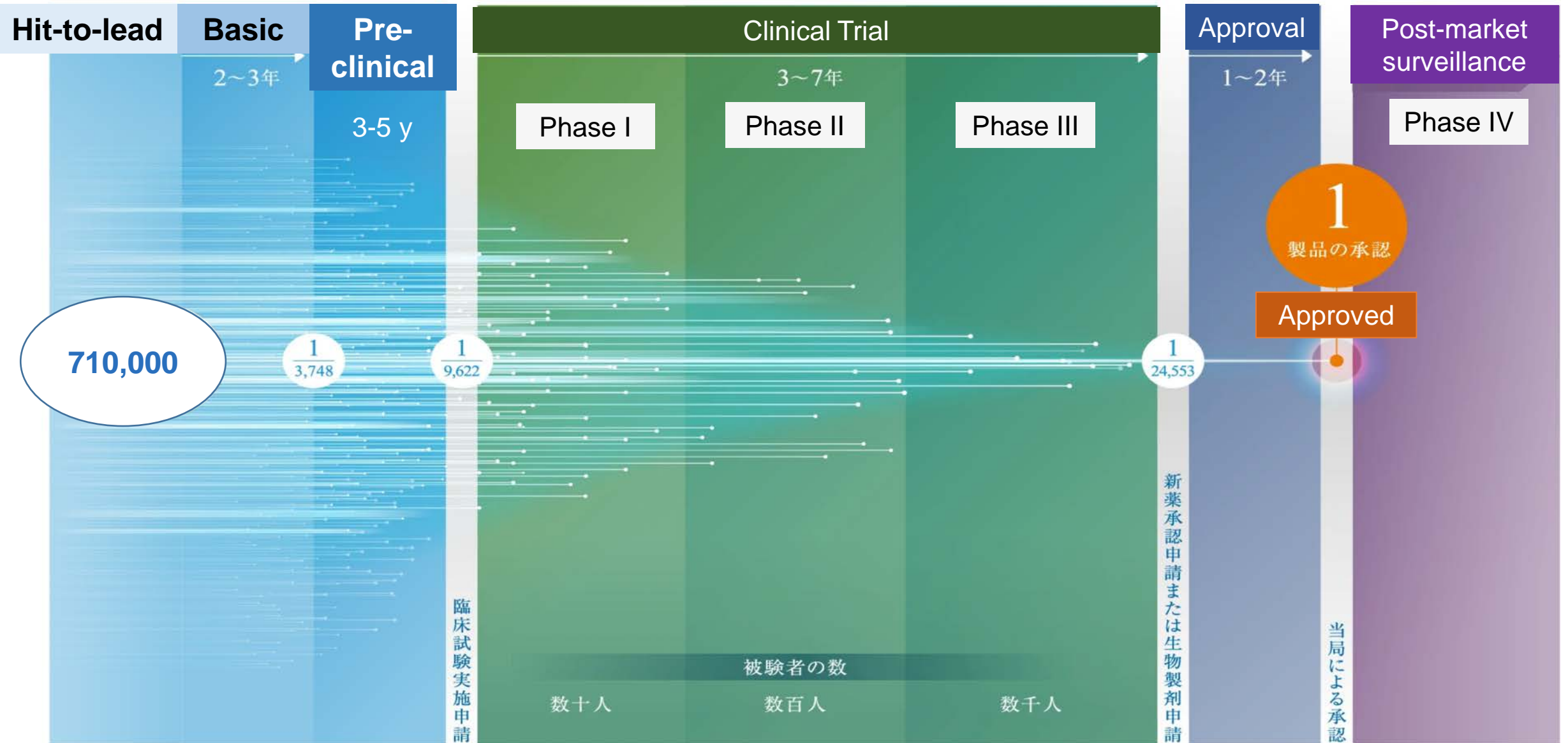


Cysticercosis



Endemic treponematoses
(including yaws)

Low success rate from drug discovery to approval



Global Partnership

35 countries

160+ partners

A collection of logos for partner organizations, including AERAS, University of Massachusetts, McGill, BROAD INSTITUTE, InBios, THE OHIO STATE UNIVERSITY, PATH, St. Jude Children's Research Hospital, Baylor College of Medicine, TB Alliance, SABIN VACCINE INSTITUTE, UF UNIVERSITY OF FLORIDA, mvi@PATH, University of Kentucky, SGC, GEISEL SCHOOL OF MEDICINE AT SALUDORA, VIP Therapeutics, JOHNS HOPKINS BIOMEDICAL SCHOOL OF PUBLIC HEALTH, IDRIX, Latham, HCI, UC San Diego, University at Buffalo, OASIS DIAGNOSTICS, OHIO UNIVERSITY, Penn, Scripps Research, and AI.

A collection of logos for partner organizations, including FIND, MMV Medicines for Malaria Venture, EVI, lygature, Institut Pasteur, LSTM, sum@CYP, CHARITÉ, MERCK, UNIVERSITY OF CAMBRIDGE, UNIVERSITY OF LIVERPOOL, Swiss TPH, DNDi, LONDON SCHOOL OF HYGIENE & TROPICAL MEDICINE, MOLOGEN AG, Biomedical Primate Research Centre, iBET, BIOPROMIC, Erasmus MC, SAFARI, SCI Foundation, RWI TUM, VGEI, ISGlobal, Institut Pasteur de Cote d'Ivoire, Universitätsklinikum Tübingen, and University of Dundee.

A collection of logos for partner organizations, including Ajinomoto, Japan BCG Laboratory, IMC 微生物化学研究所, 化血研, Panasonic, CHUGAI PHARMACEUTICAL CO., LTD., 東京医科歯科大学, Sumitomo Dainippon Pharma, SHIONOGI, Eisai, FUJIFILM, astellas, Takeda, CFS, meiji, Meiji Seika Pharma, 第一三共RD/パルセ株式会社, 北里研究所, CHUGAI PHARMACEUTICAL CO., LTD., Dalich-Sanryo, GeneDesign, Inc., HyphaGenesis, 愛媛大学, THE UNIVERSITY OF TOKYO, OSAKA UNIVERSITY, KANAZAWA UNIVERSITY, NIBIOHN, 国立研究開発法人 医薬基盤・健康・栄養研究所, OP BIO Factory, CREATE VACCINE CO., LTD., Nobelpharma, MTR, NIID, 理化学研究所, malaria NO MORE japan, FRONTIER INSTITUTE co.,ltd., AIST, AsahiKASEI, 富山大学, FASMAC, 帝京大学, KAO, 慶應義塾大学, TBA, and Schen.

A collection of logos for partner organizations, including Singapore Intronology Network, USM, icddr,b, and GENNOVA.

A collection of logos for partner organizations, including Far manguinhos, HOSPITAL GENERAL DE EDUARDO LUCENA, Universidad de Concepcion, INCMSZ, UNIV. NACIONAL DE LA PLATA, CEDIC, CEADES, and Mundo Sano.

A collection of logos for partner organizations, including GULU UNIVERSITY, IFAKARA HEALTH INSTITUTE, MRC, ERADA TECHNOLOGY ALLIANCE, INSTITUT RAOUL FOLLEREAU DE COTE D'IVOIRE, Institut Pasteur de Côte d'Ivoire, and cermel.

Walter+Eliza Hall Institute of Medical Research
DISCOVERIES FOR HUMANITY

COVID-19 also brought opportunities

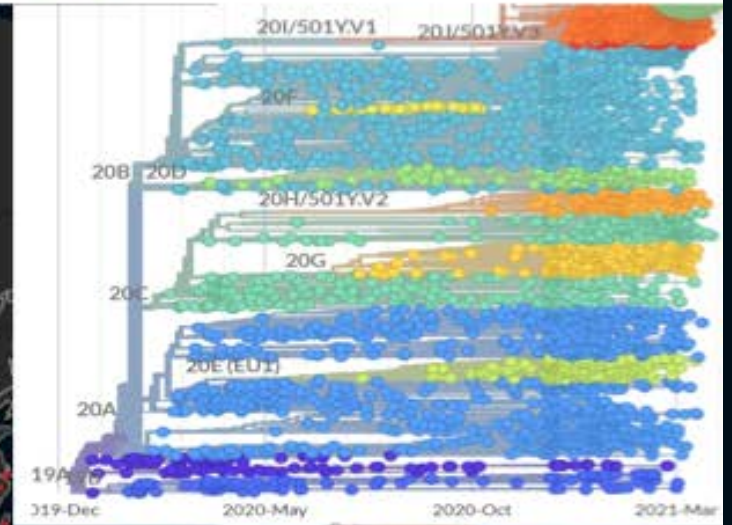
Innovation

NATURE

THE LANCET



The NEW ENGLAND JOURNAL of MEDICINE



Development of COVID-19 Vaccines

242
Vaccine
Candidates

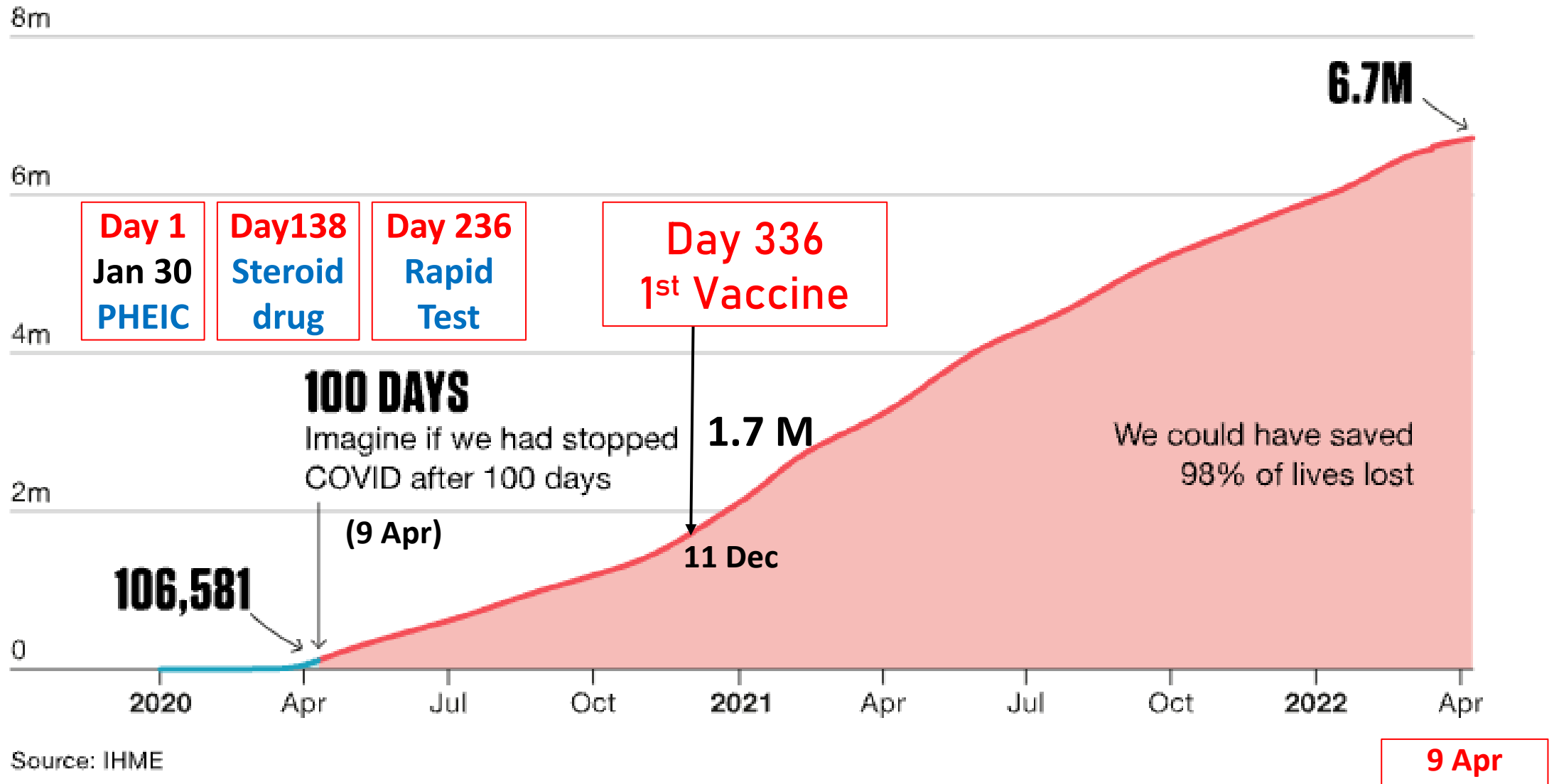
821
Vaccine
Trials

80
Countries with
Vaccine Trials

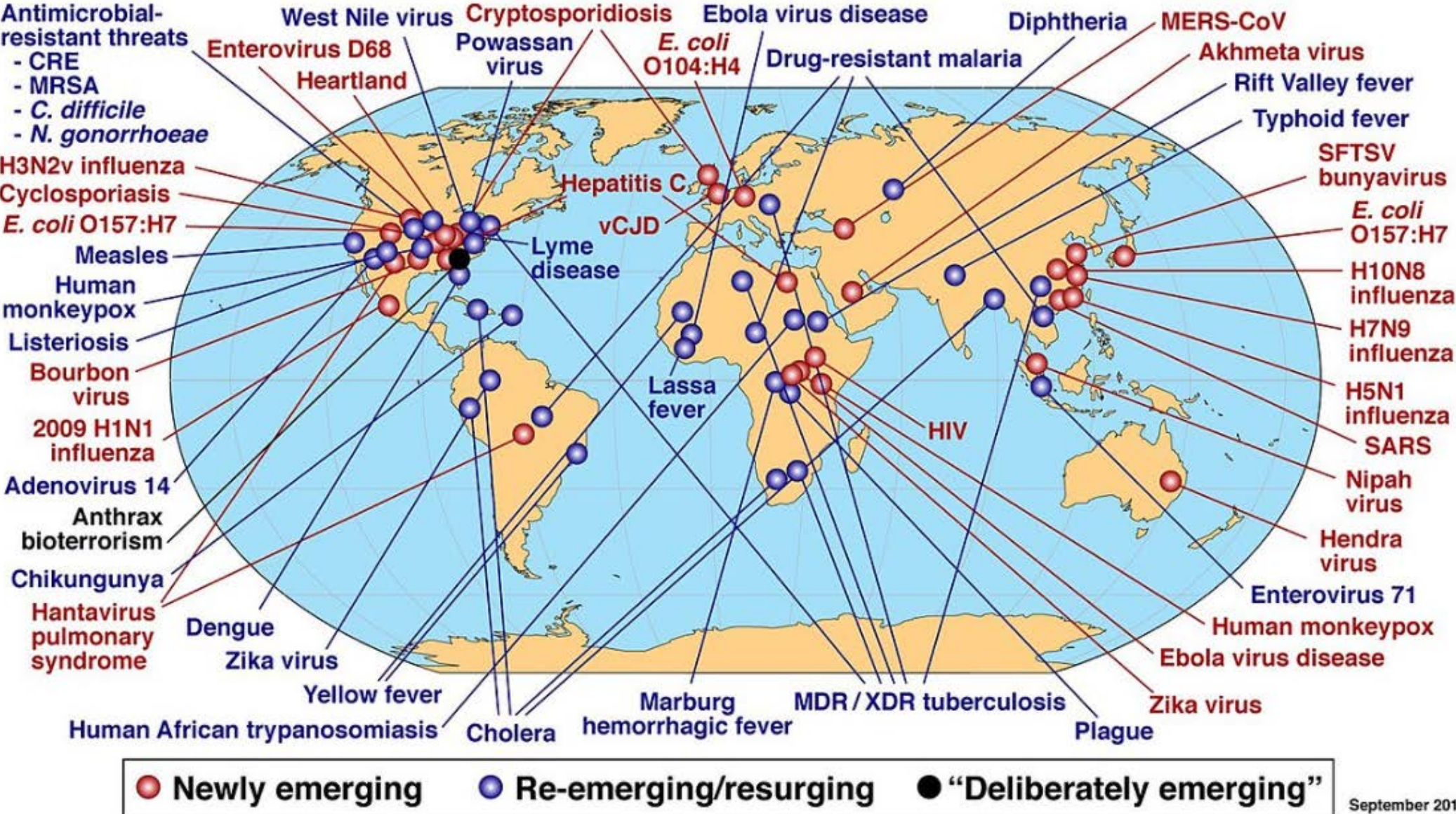


As of Oct 2023

COVID-19 Deaths reported worldwide

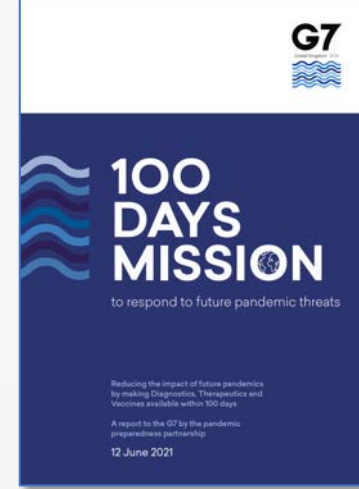


Emerging and Reemerging diseases



September 2017

Credit: A. Fauci



100 DAYS MISSION

Available, Safe, Effective, Affordable



Accurate and approved rapid **diagnostic tests**



An initial regimen of **therapeutics**




Vaccines ready to be produced at scale


to respond to future pandemic threats

Global key stakeholders to achieve 100DM



Financing

 World Bank Financial intermediary fund

 G20 Joint Finance-Health Task Force: Coordination





Governance

 WHO HEPR¹ : (health emergency preparedness & response) initiative




Collaborative Surveillance


 WHO Berlin Hub

 Jameel Institute ICL²: Global surveillance dashboard




Access to Counter-measures

 PAVM³ : Partnership for African Vx Mfg

 HERA⁴ : EU R&D initiative

WHO/FIND: Collaboration to strengthen Dx access


 READDI, AVIDD: Drug discovery & development


CEPI: Vx CEPI development




Emergency Coordination

 WHO AFRO SURGE⁵

 AfCDC AVoHC⁶ : African Health Corps

 ACPHEED⁷ : Southeast Asia CDCequivalent

 COVAX/ACT Accelerator:




Community Protection

 Collective Service: RCCE⁸ Partnership

 IFRC⁹

 GERM¹⁰: Expert monitoring/response team

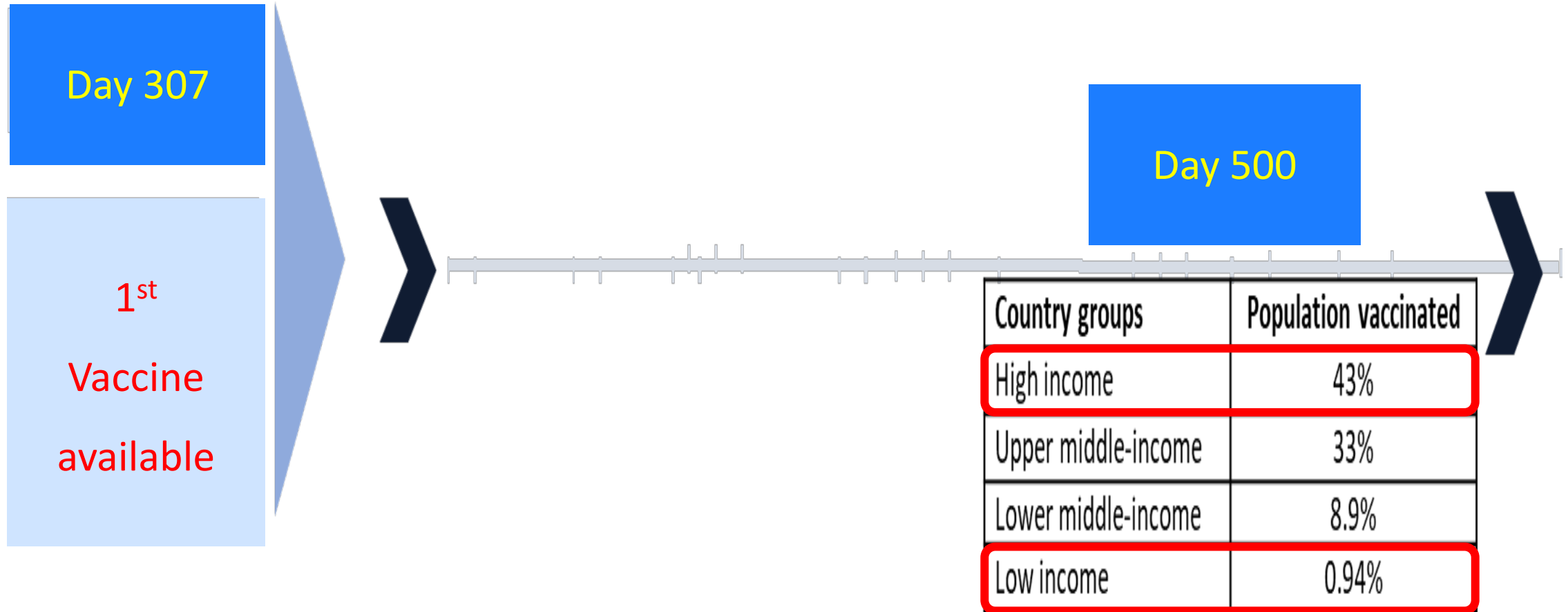
 WHO Lyon Academy:



Clinical Care

 EIB¹¹: Financing for hospital construction & primary centres

Access & Delivery (A&D) matters



What are key to achieve 100DM?

- Sharing samples, data and information
- Technical transfer of R&D and A&D
- Global networking and alignment of clinical trials and approval process
- Local/Regional manufacturing, procurement