



# Digital Governance of Smart Healthcare

## Min-Huei Hsu M.D., Ph.D.



臺北醫學大學  
TAIPEI MEDICAL UNIVERSITY

❖ GPT-4



70

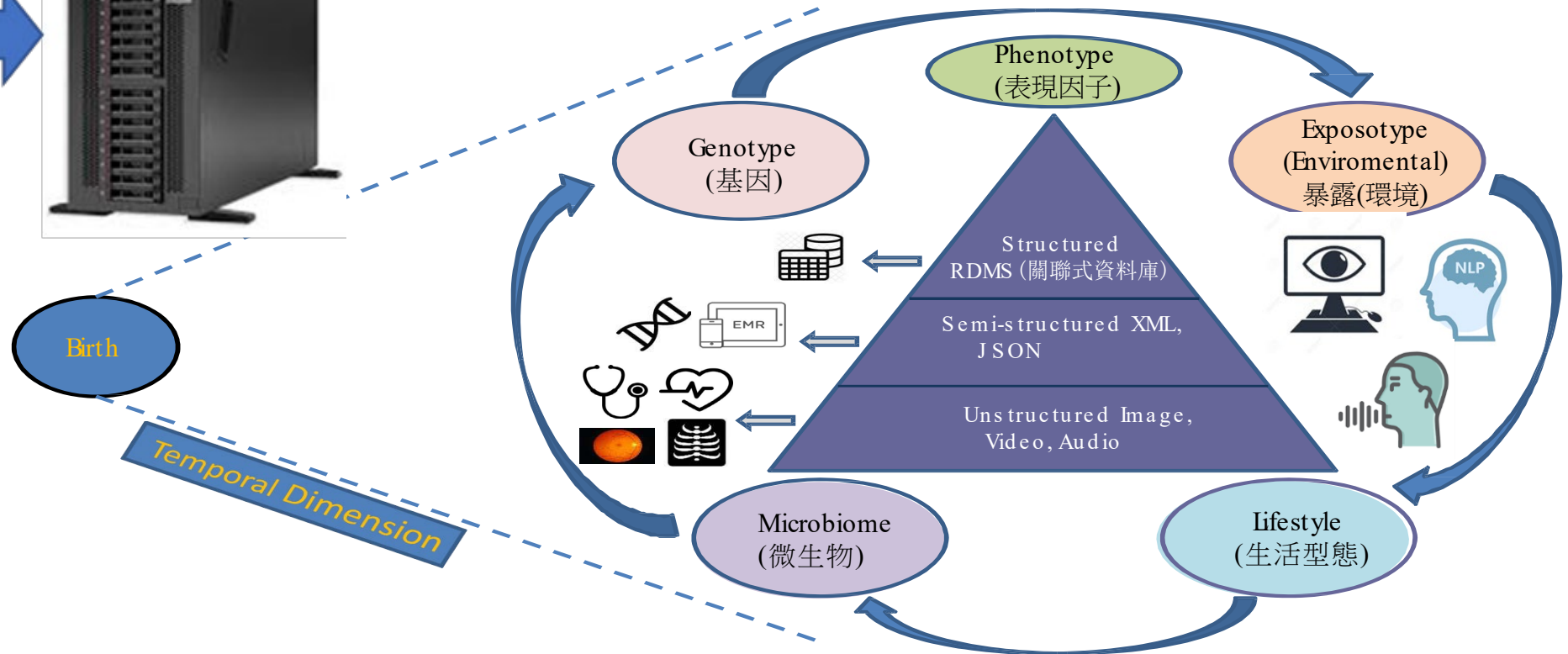
What's smart healthcare?



Smart healthcare refers to the integration of advanced technologies such as the Internet of Things (IoT), Artificial Intelligence (AI), telemedicine, Electronic Health Records (EHRs), and mobile technology into healthcare services to improve the quality of patient care, enhance health outcomes, and optimize the efficiency of healthcare delivery.



# Real world data. Real world evidence.



# What is health data?

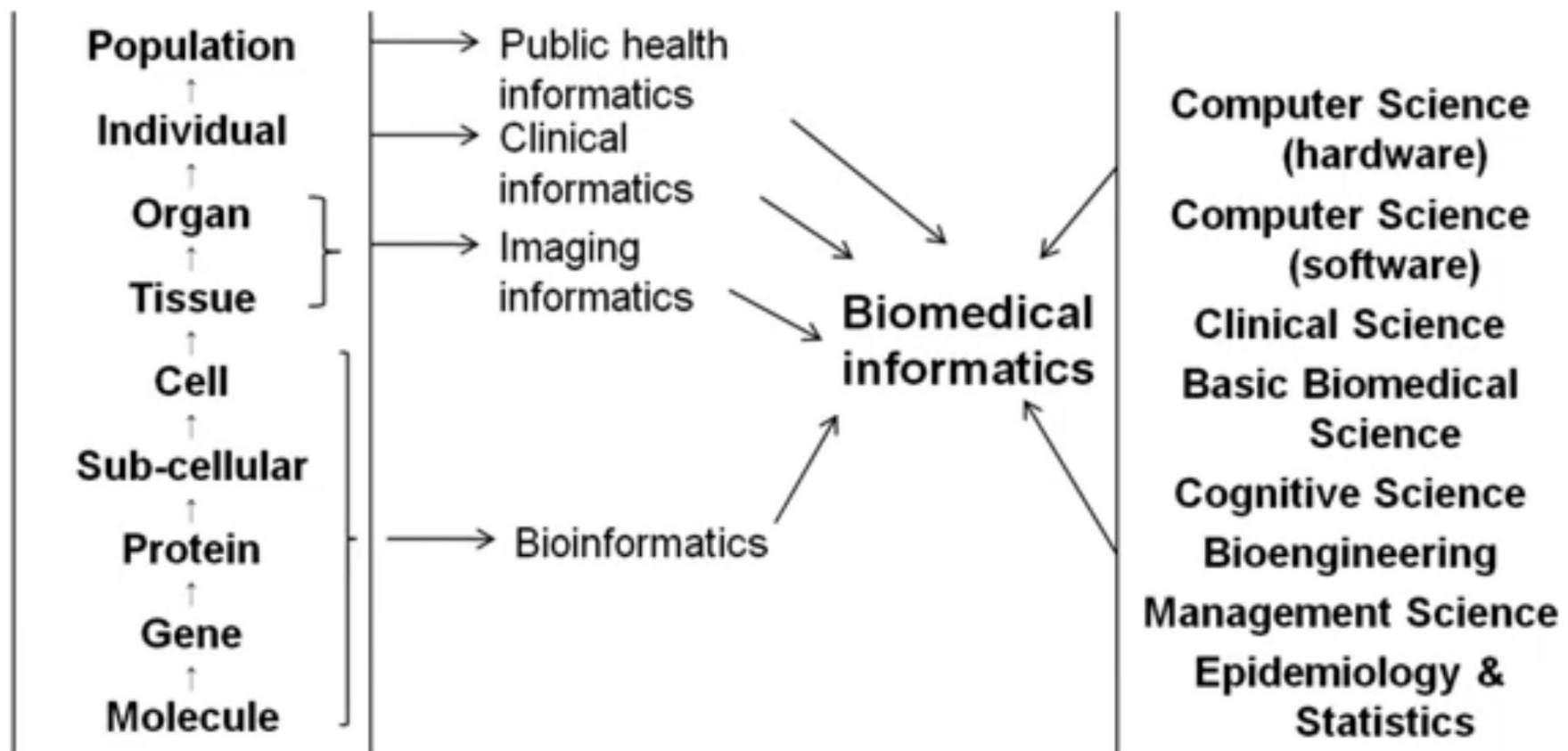
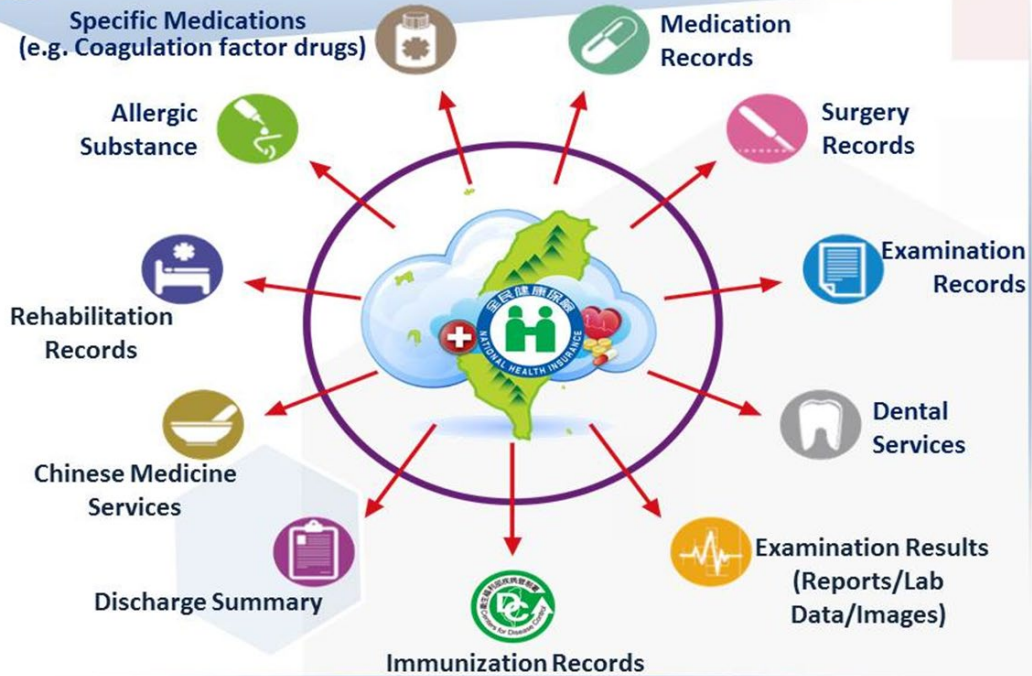


Figure 1.2 Biomedical Informatics: Modified by Dr. Jiajie Zhang, The University of Texas at Houston, School of Biomedical Informatics from Shortliffe & Blois, 2001



# NHI MediCloud System



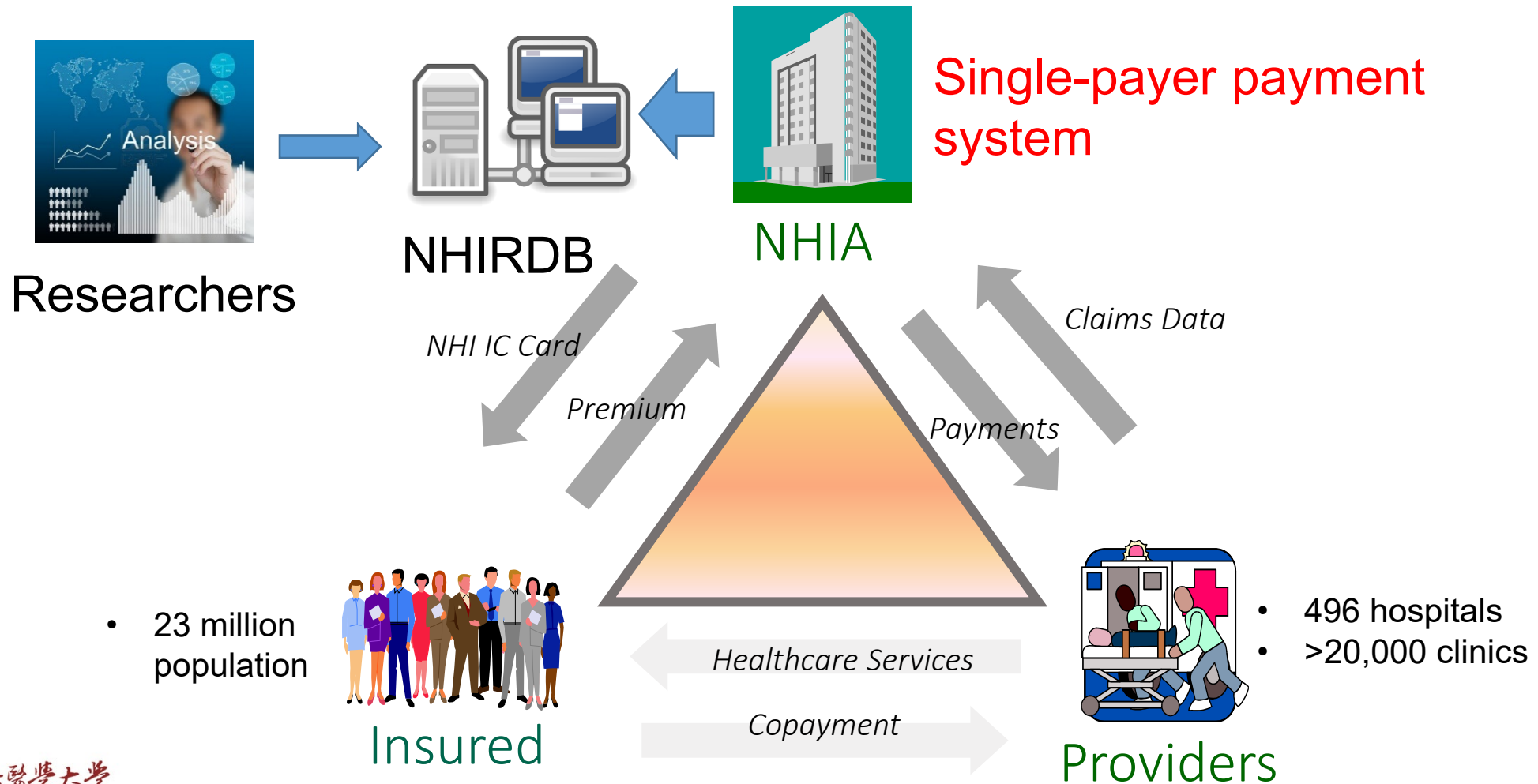
# My Health Bank

- Heightening the awareness of self-care
- Reaching self-data anytime anywhere

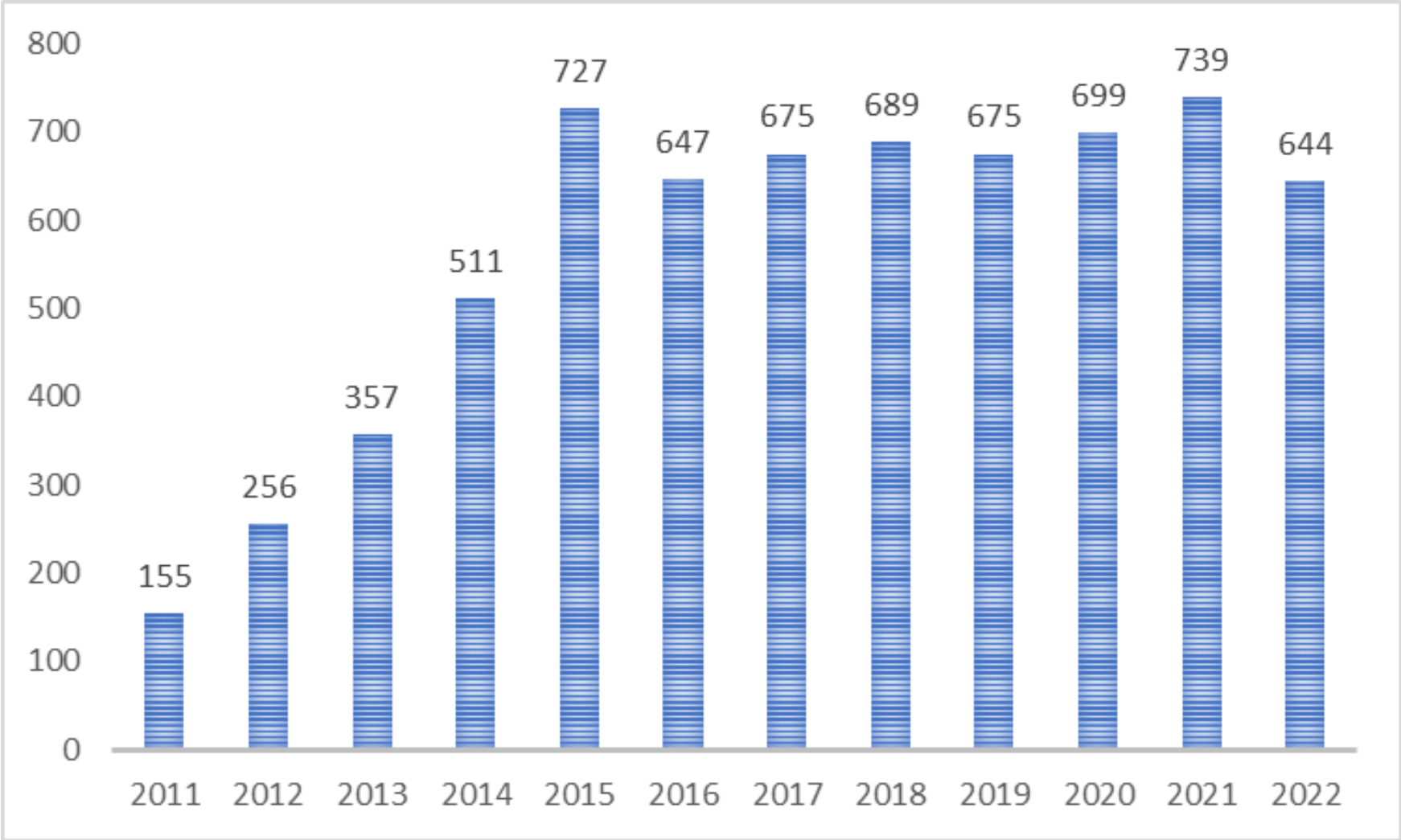
The image shows two screenshots of the My Health Bank mobile application. The left screenshot displays the home screen with a status bar at the top showing '中華電信 4G' and '上午 9:48'. Below the status bar is a navigation bar with '健保快易通 | 健康存摺'. The main content area includes a message about COVID-19 vaccine appointment, a '重要資訊' (Important Information) section with links for vaccine appointments, OTP authentication, virtual NHI cards, and the My Health Bank, and a bottom navigation bar with icons for Home, My Health Bank, My Records, My Reports, and My Profile.

The right screenshot shows the login screen with a status bar at the top showing '中華電信 4G' and '上午 9:48'. Below the status bar is a navigation bar with '< 上一頁' and '登入'. The main content area includes a message about COVID-19 vaccine appointment, a '請輸入註冊密碼' (Please enter your registered password) field, a '下一步' (Next Step) button, and a note about using the '裝置認證' (Device Authentication) feature. A bottom navigation bar is also visible.

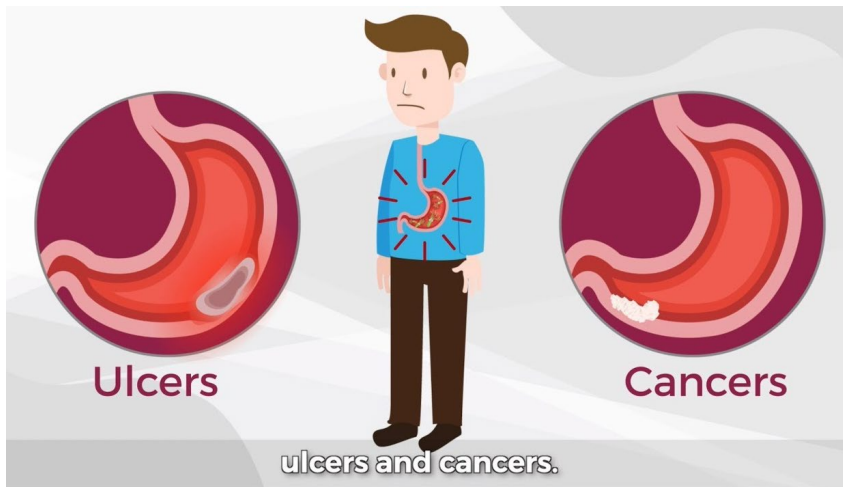
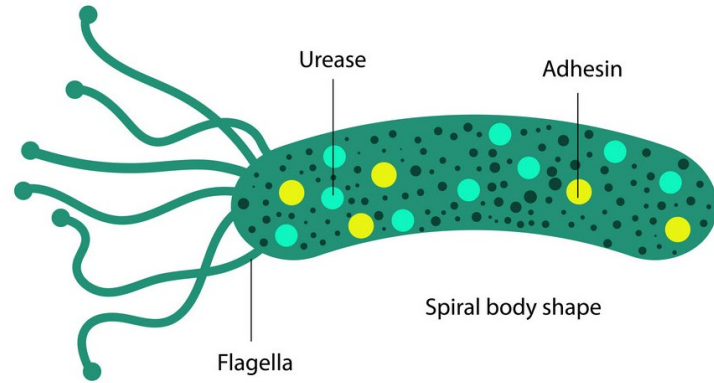
# Taiwan National Health Insurance(Since 1994)



# Publications Using NHIRDB Indexed by PubMed



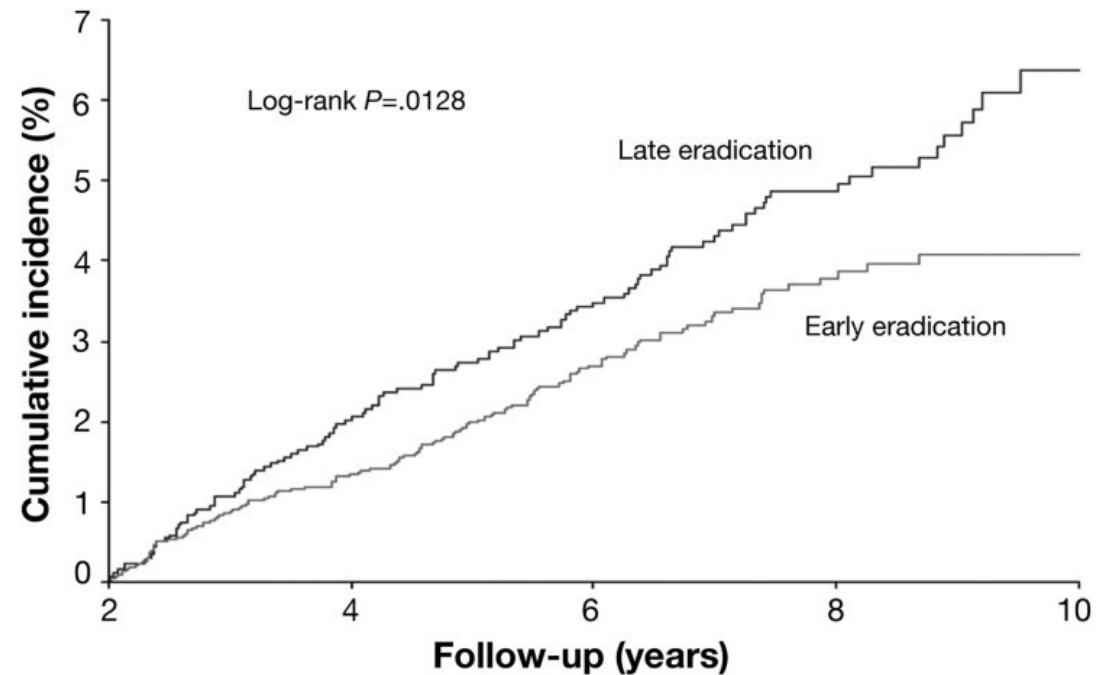
# Helicobacter pylori



## Early *Helicobacter pylori* Eradication Decreases Risk of Gastric Cancer in Patients With Peptic Ulcer Disease

CHUN-YING WU,<sup>\*,†,§</sup> KEN N. KUO,<sup>||</sup> MING-SHIANG WU,<sup>¶</sup> YI-JU CHEN,<sup>§,#</sup> CHANG-BI WANG,<sup>\*</sup> and JAW-TOWN LIN<sup>¶,\*\*</sup>

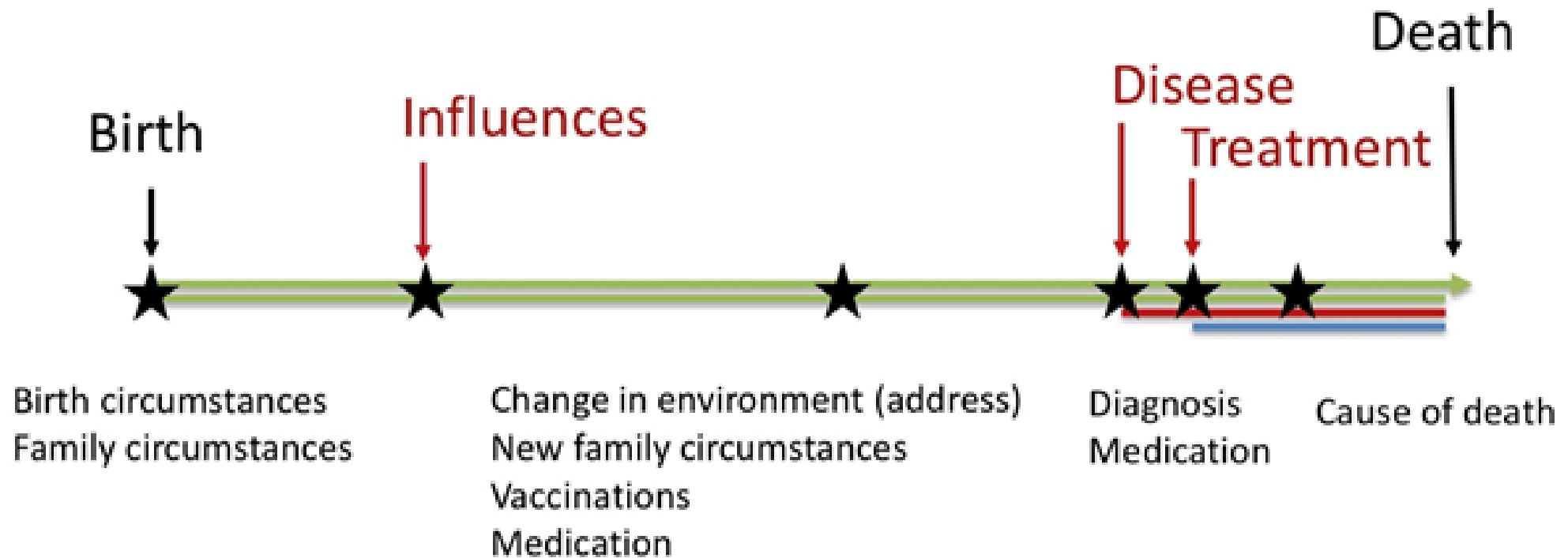
<sup>\*</sup>Division of Gastroenterology, Taichung Veterans General Hospital, Taichung; <sup>†</sup>Department of Public Health, College of Public Health, China Medical University, Taichung; <sup>§</sup>Faculty of Medicine, School of Medicine, National Yang-Ming University, Taipei; <sup>||</sup>Center for Health Policy Research and Development, National Health Research Institutes, Miaoli; <sup>¶</sup>Division of Gastroenterology, National Taiwan University Hospital, Taipei; <sup>#</sup>Department of Dermatology, Taichung Veterans General Hospital, Taichung; and <sup>\*\*</sup>Department of Internal Medicine, E-Da Hospital and I-Shou University, Kaohsiung County, Taiwan





# From Cradle to Grave

## Disease migration through generations





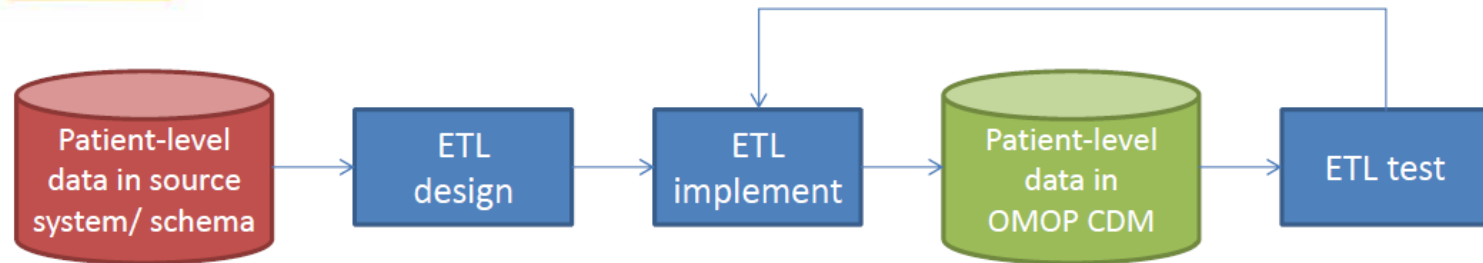
# OHDSI (The Observational Health Data Sciences and Informatics)



- >300 collaborators from 30 different countries
- Experts in informatics, statistics, epidemiology, clinical sciences
- Active participation from academia, government, industry, providers
- Records on about 600 million unique patients in >100 databases



## Tools to help you map data



OHDSI tools built to help

**WhiteRabbit:**  
profile your source data

**RabbitInAHat:**  
map your source structure to CDM tables and fields

**ATHENA:**  
standardized vocabularies for all CDM domains

**Usagi:**  
map your source codes to CDM vocabulary

**CDM:**  
DDL, index, constraints for Oracle, SQL Server, PostgreSQL; Vocabulary tables with loading scripts

**ACHILLES:**  
profile your CDM data; review data quality assessment; explore population-level summaries

**OHDSI Forums:**

Public discussions for OMOP CDM Implementers/developers

# OHDSI Taiwan Chapter

---



# OHDSI Research Article

---

- 8 countries, 11 hospitals
- JAMA Netw Open. 2022 Mar 1;5(3):e223877.



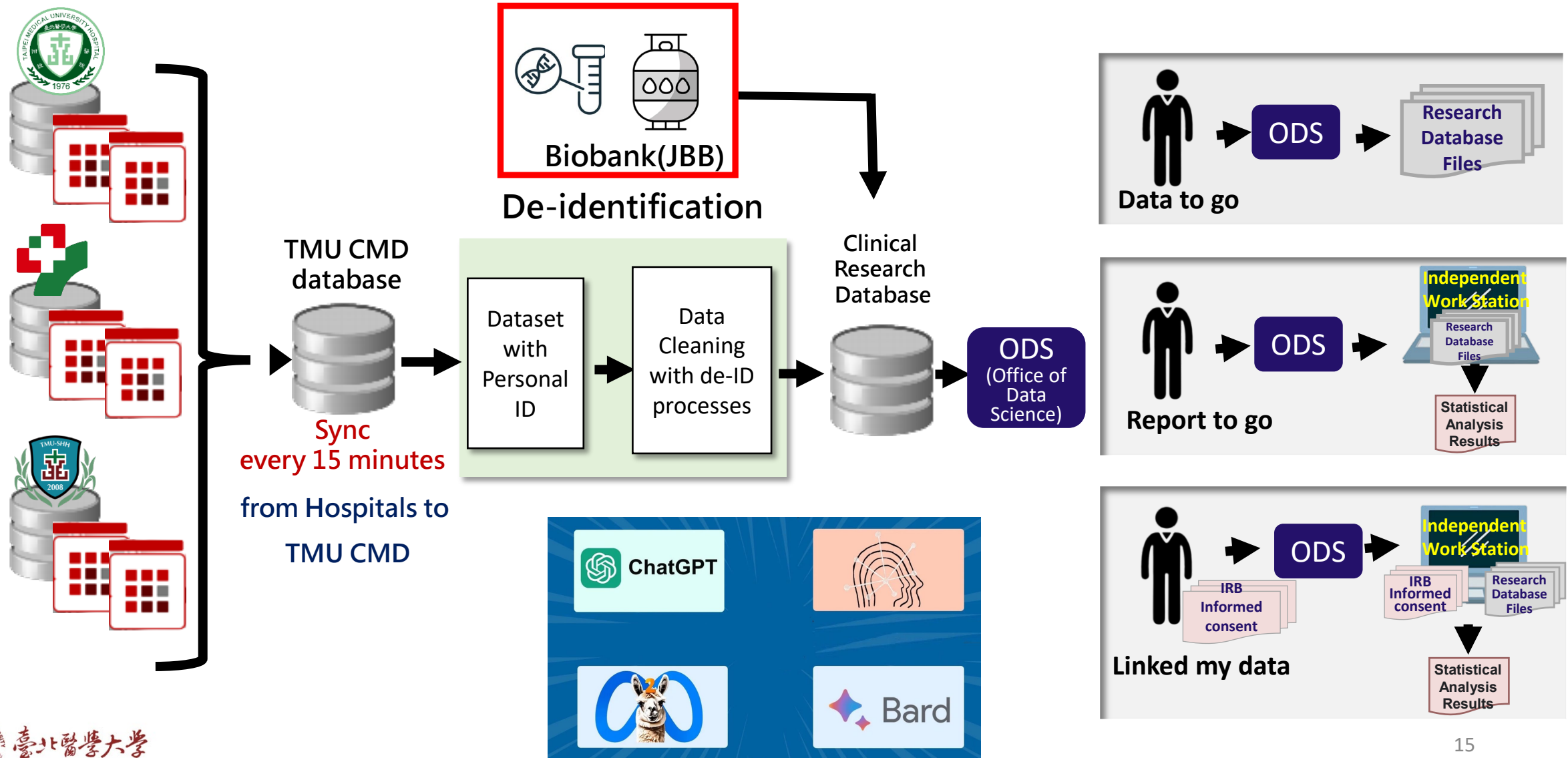
---

**Original Investigation** | Cardiology

## Analysis of Dual Combination Therapies Used in Treatment of Hypertension in a Multinational Cohort

Yuan Lu, ScD; Mui Van Zandt, BS; Yun Liu, PhD; Jing Li, MS; Xialin Wang, MS; Yong Chen, PhD; Zhengfeng Chen, MBBS, MMed; Jaehyeong Cho, PhD; Sreemaneesha Dorajoo, PhD; Mengling Feng, PhD; Min-Huei Hsu, MD, PhD; Jason C. Hsu, PhD; Usman Iqbal, PharmD, MBA, PhD; Jitendra Jonnagaddala, PhD; Yu-Chuan Li, MD, PhD; Siaw-Teng Liaw, MBBS, PhD; Hong-Seok Lim, MD, PhD; Kee Yuan Ngiam, MBBS, MMed; Phung-Anh Nguyen, PhD; Rae Woong Park, MD, PhD; Nicole Pratt, PhD; Christian Reich, MD, PhD; Sang Youl Rhee, MD; Selva Muthu Kumaran Sathappan, MSc; Seo Jeong Shin, PhD; Hui Xing Tan, MTech; Seng Chan You, MD, PhD; Xin Zhang, MS; Harlan M. Krumholz, MD, SM; Marc A. Suchard, MD, PhD; Hua Xu, PhD

# TMUCRD integrated with TMU Biobank



# Taipei Medical University Clinical Research Database (TMUCRD)



4M+  
Patients



15 Years  
Follow-up



61M+  
OPD



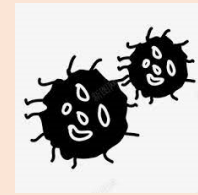
805K+  
Admission



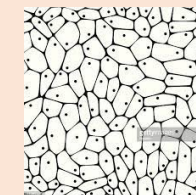
1PB  
Image



30TB  
EMR



72K  
Cancer



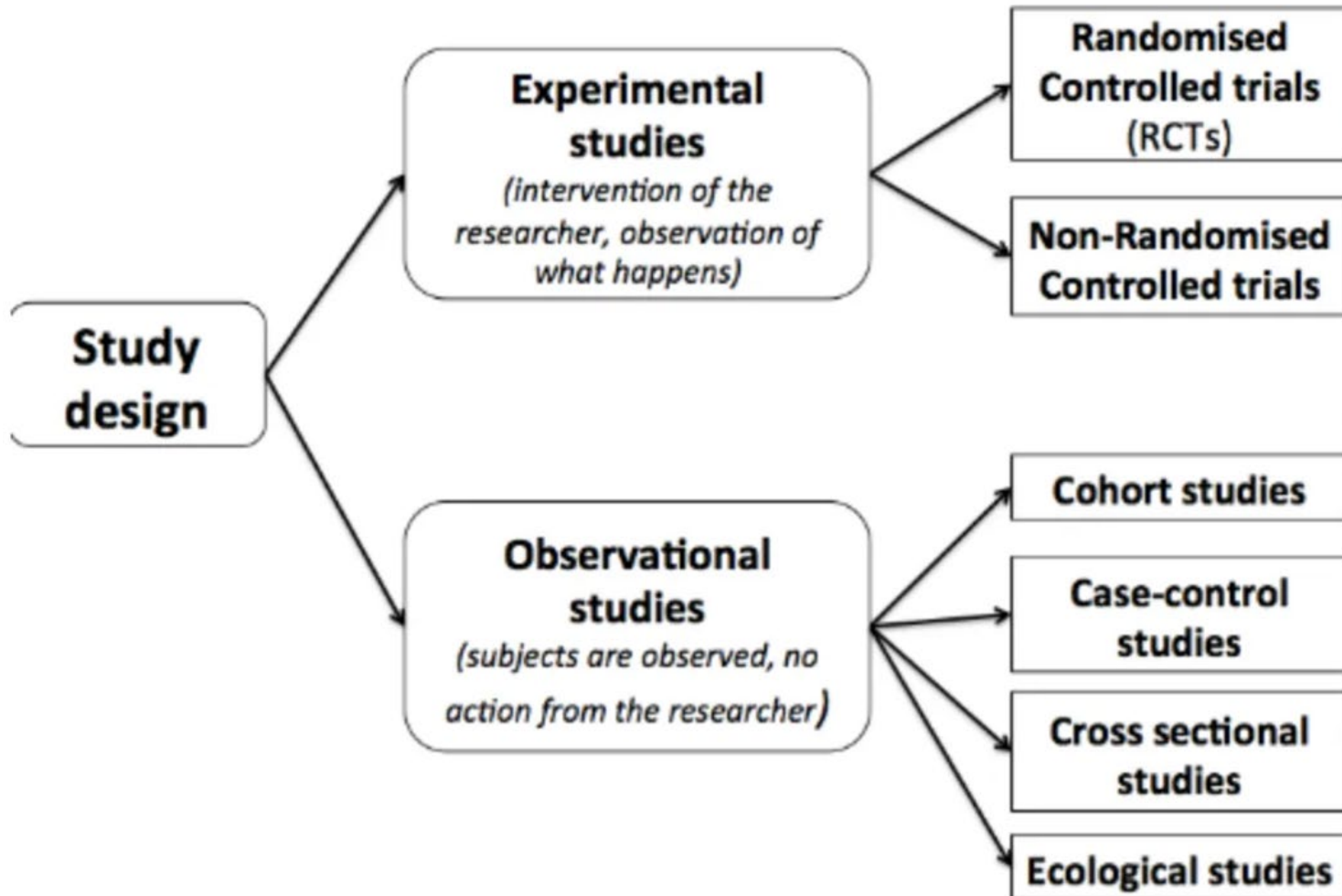
50K+  
Tissue

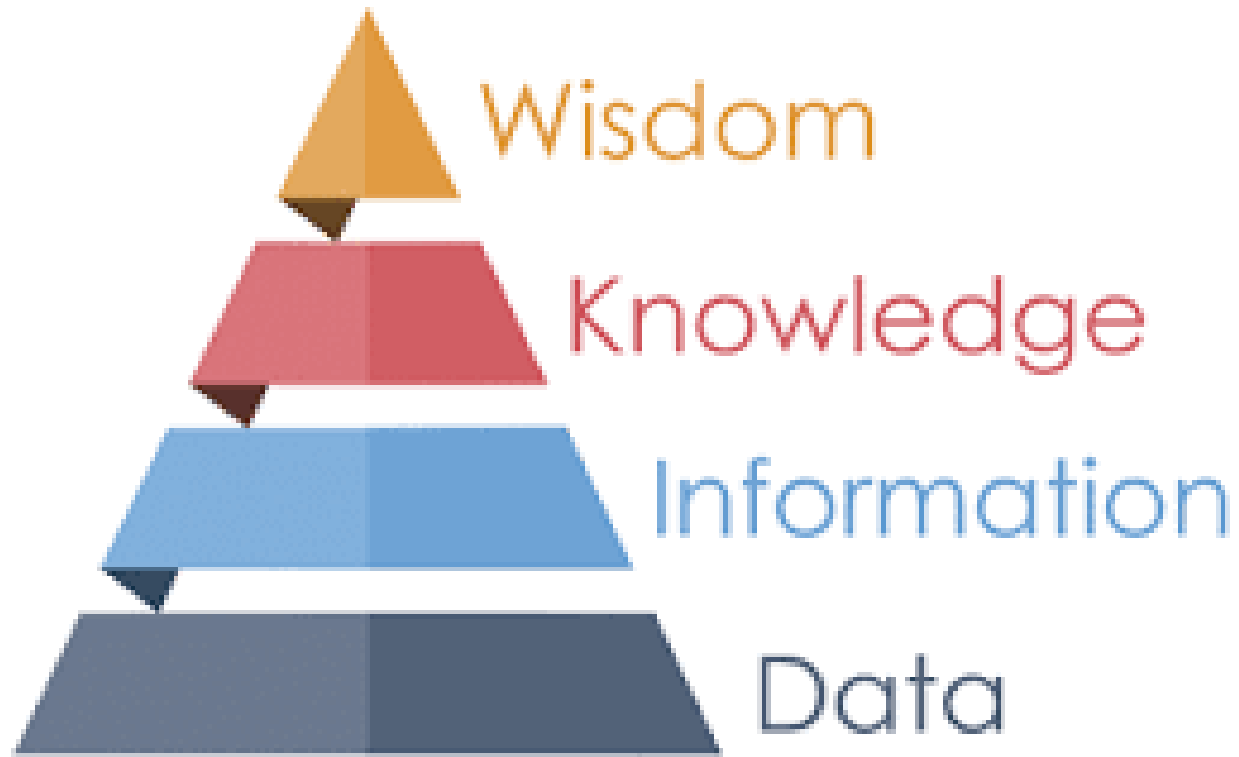


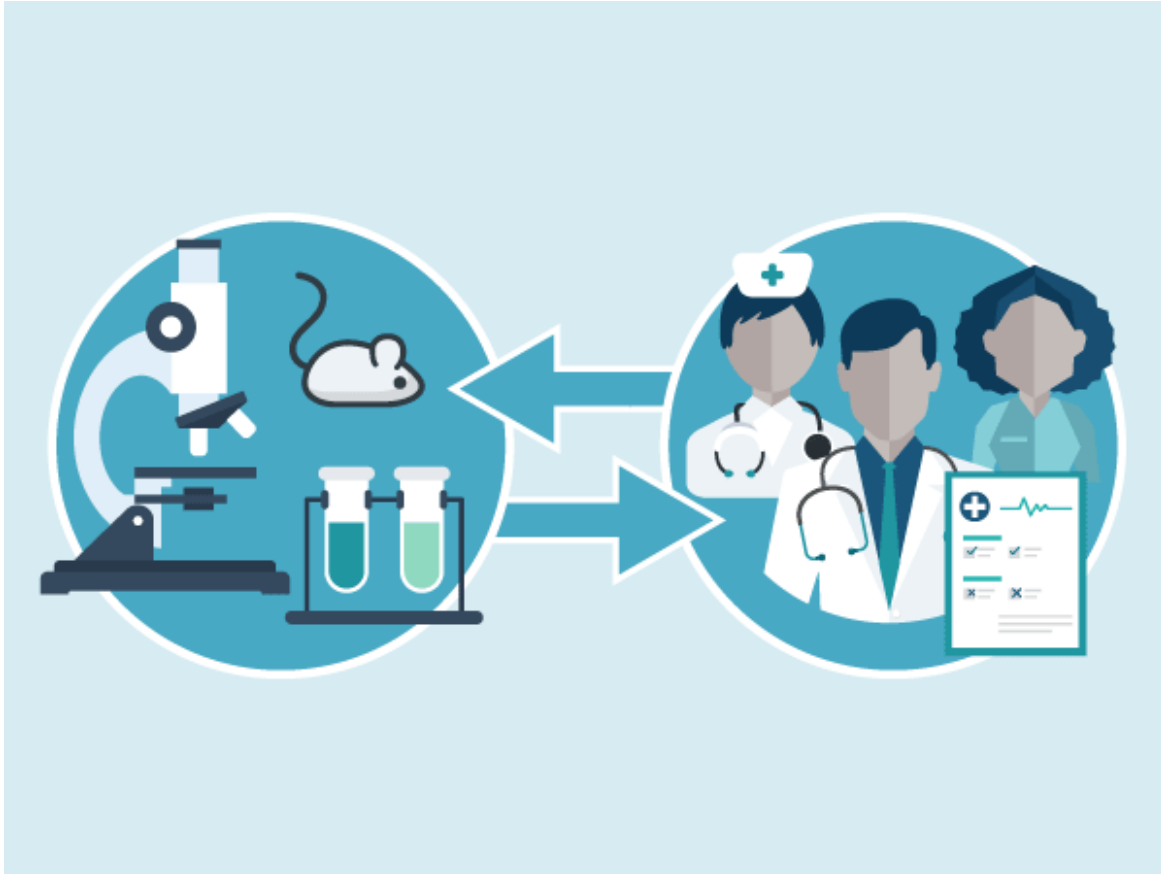
---

**Thank you. Comments?**

---







- **B**ench
- **B**ytes
- **B**edside
- **B**usiness